

NAAMES Afternoon WX Discussion

Thursday, November 12, 2015

Saturday 11/14

Waves: NNW 7-12 ft
 Winds: NW 10-15 kts
 Scattered-broken low,
 scattered mid, high
 No precip
 Temp ~ upper 30's
 WC~28 F

Sunday 11/15

Waves: S 9-12 ft
 Winds: NNW 10-15 kts
 Scattered low, clear
 mid, high
 No precip
 Temp ~ upper 30s
 WC ~ upper 20s

Friday 11/13

Waves: NNW 9-12 ft
 Winds: Variable 0-10 kts
 Scattered-clear low,
 clear mid, scattered-
 clear high high
 No precip
 Temp ~ lower 40s

Monday 11/16

Waves: SSE 7-12 ft
 Winds: NNE 15-20 kts
 Broken-overcast low,
 scattered mid, clear high
 Small chance of light
 precip
 Temp ~ lower 40s

Tuesday 11/17

Waves: SSE 9-15 ft
 Winds: NNW 15-20 knots
 Scattered-broken low,
 mid, clear high
 Small chance of light precip
 Temp ~ lower 40's

Wednesday 11/18

Waves: SSE 9-15 ft
 Winds: NNW 20-25 knots
 Scattered to broken low,
 mid, clear high
 Small chance of light precip
 Temp ~ upper 40's

Saturday 11/21

Waves: ft
 Winds: NNE 25-30 kts
 Broken-overcast low,
 mid, scattered high
 Possible light precip
 Temp ~ mid 50s

Friday 11/20

Waves: ft
 Winds: NNE 15-20 kts
 Scattered-broken all
 levels
 Small chance of light
 precip
 Temp ~ upper 40s

Thursday 11/19

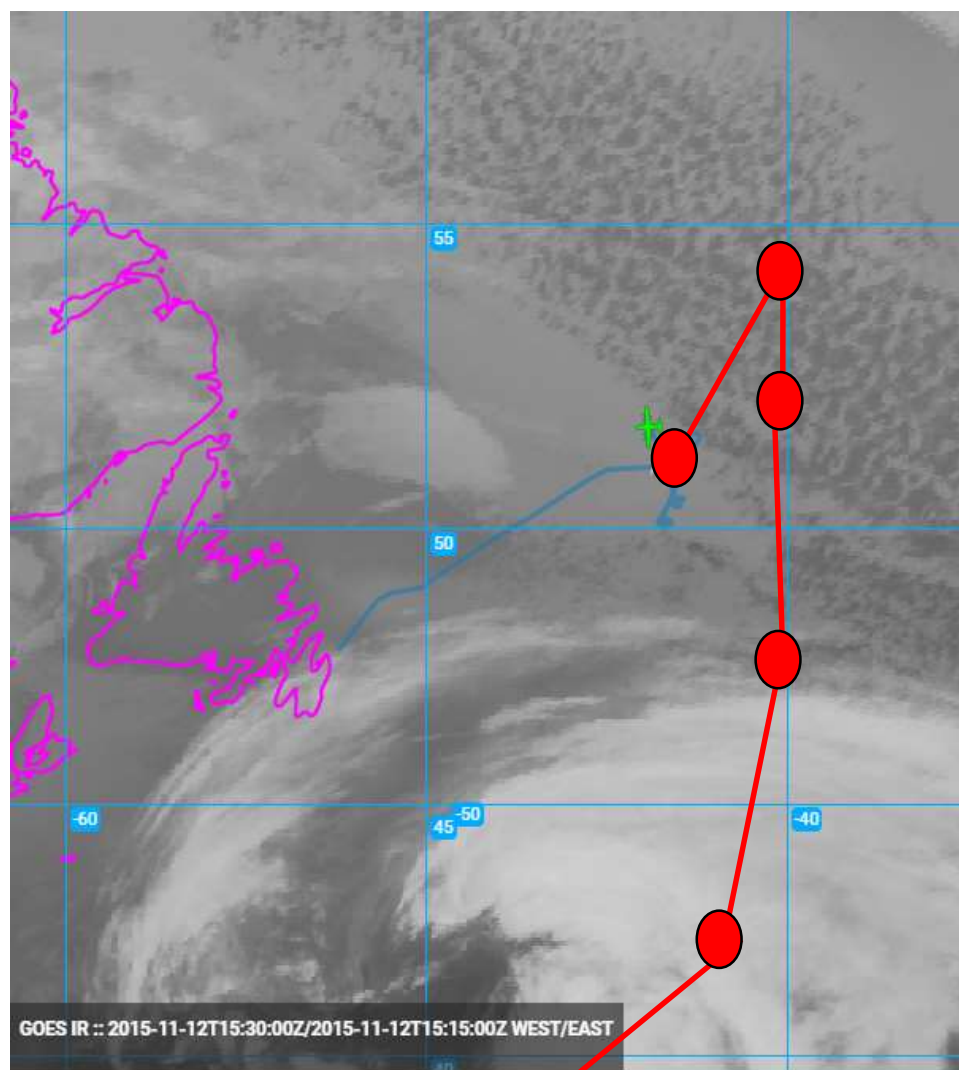
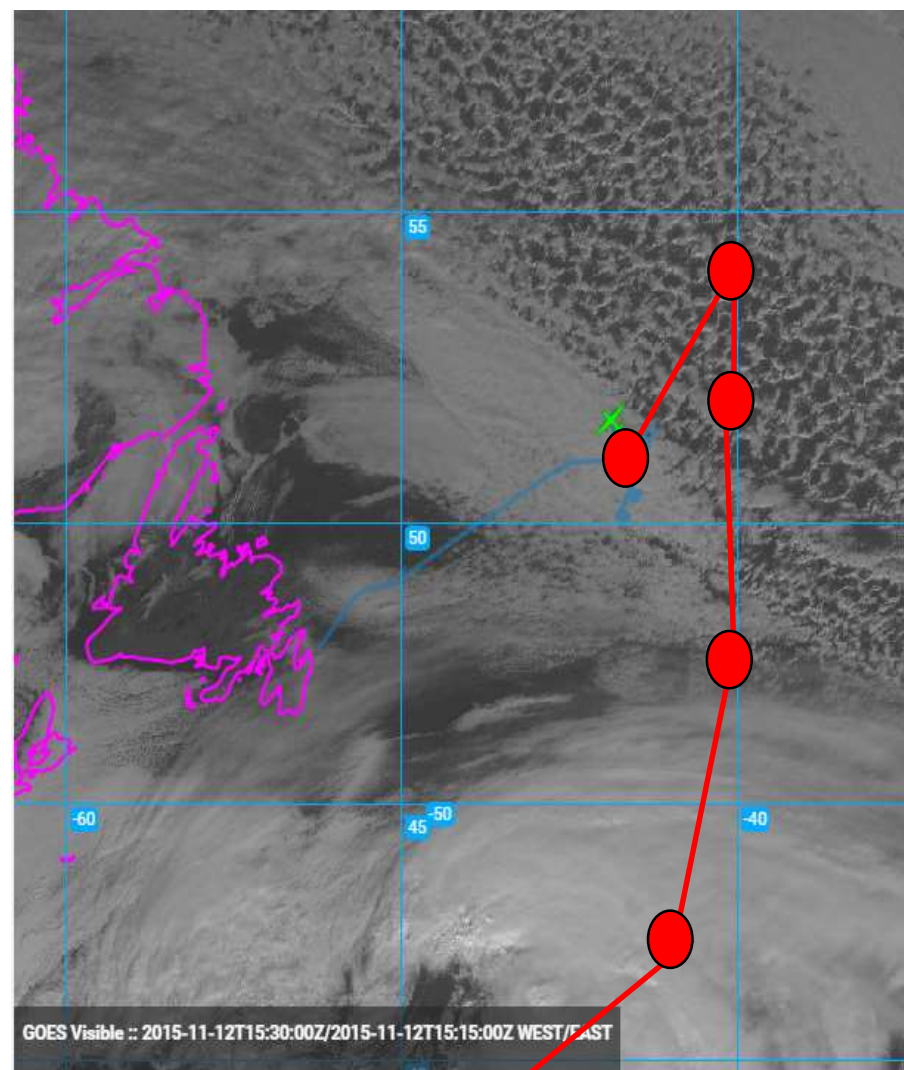
Waves: NW 9-15 ft
 Winds: NNW 15-20 kts
 Scattered to broken all
 levels
 Small chance of light
 precip
 Temp ~ upper 40's

Station	Latitude	Longitude	Lat (decdeg)	Lon (decdeg)	Arrive	Deploy	Leave
1	51° 00.7' N	43° 38.1' W	51.01167	43.635	11/11 Wed evening	11/12 Thur morning to Thur afternoon	11/12 Thur afternoon
2	54° 06.4' N	40° 11.0' W	54.10667	40.18333	11/14 Sat morning	11/14 Sat morning to 11/15 Sun afternoon	11/15 Sun afternoon
3	52° 6.88' N	39° 54.8' W	52.11467	39.91333	11/16 Mon morning	11/16 Mon morning to 11/17 Tue afternoon	11/17 Tue afternoon
4	47° 58.2' N	40° 09.7' W	47.97	40.16167	11/18 Wed afternoon	11/18 Wed afternoon to 11/19 Friday afternoon	11/19 Friday afternoon
5	43° 28.9' N	41° 48.1' W	43.48167	41.80167	11/20 Sat evening	11/20 Sat evening to 11/22 Mon afternoon	11/22 Mon afternoon
6	43° 17.0' N	40° 22.7' W	43.28333	40.37833			
7	40° 31.673' N	47° 36.28' W	40.52788	47.60467	11/24 Tue afternoon	11/24 Tue afternoon to 11/26 Thur afternoon	11/25 Thur afternoon
WHOI			41.5245	70.671	12/1 Tue afternoon		

Satellite (11/12 15:15 Z)

Visible

IR



Terra/Aqua Chlorophyll (Nov. 5-7)

