

NAAMES Afternoon WX Discussion

Friday, September 1, 2017

Amy Jo Scarino

Forecast Summary

Day 1 (Saturday) – September 2

Recommendation: C-130 in St. John's, Atlantis transit to S1

St. John's: Partly cloudy, afternoon into evening rain showers, high 63, winds W 15-25 mph

Day 2 (Sunday) – September 3

Recommendation: C-130 in St. John's, Atlantis transit to S1

St. John's: Partly cloudy, high 62, winds NW 15-25 mph

Day 3 (Monday) – September 4 – Ship at S1

Recommendation: First science flight

St. John's: Partly cloudy, afternoon isolated rain showers, high 64, winds SSW 15-25 mph

Day 4 (Tuesday) – September 5 – Ship in transit to S2

Recommendation: Potential flight

St. John's: Partly cloudy, high 69, winds WSW 20-30mph, gusts to 35 mph

Day 5 (Wednesday) – September 6 – Ship at S2

Recommendation: Potential flight

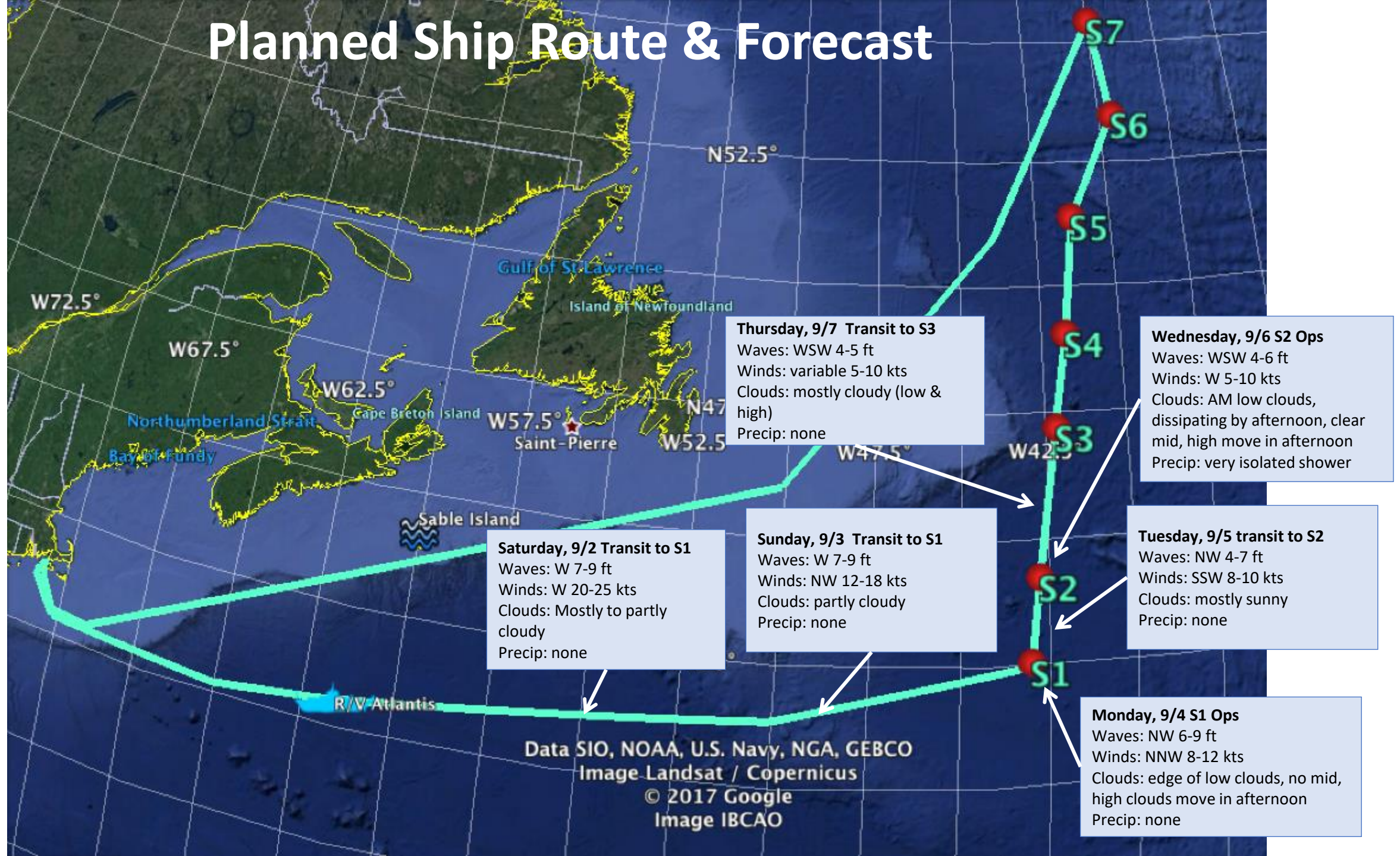
St. John's: Sunny with increasing cloud cover, high 73, winds WSW 20-30 mph, gusts to 35 mph

Day 6 (Thursday) – September 7 – Ship in transit to S3

Recommendation: TBD

St. John's: Partly cloudy, high 73, winds SW 20-30 mph, gusts to 35 mph

Planned Ship Route & Forecast



Current Conditions at St. John's

St. John's, Canada ★ 🏠

✈ St. John's International | [Change Station](#) ▼

🕒 1:04 PM NDT on September 01, 2017 (GMT -0230)

[Forecast](#) [History](#) [Calendar](#) [Rain / Snow](#) [Health](#)

Elev 459 ft 47.62 °N, 52.73 °W | Updated 5 min ago



Mostly Cloudy

59 °F

Feels Like 59 °F



Wind from NW
Gusts 24 mph

Today is forecast to be **WARMER** than yesterday.

Today

High 63 | Low 51 °F

☁ 30% Chance of Precip.

Yesterday

High 57 | Low 46 °F

Precip. 0 in

✉ Sign up for your Daily Forecast Email

Pressure	29.55 in
Visibility	15.0 miles
Clouds	Mostly Cloudy 1100 ft
Dew Point	54 °F
Humidity	82%
Rainfall	0.00 in
Snow Depth	Not available.

Sun & Moon

🌅 6:19 am
🌇 7:41 pm

🌖 Waxing Gibbous,
79% visible

SPECI CYYT 011529Z 31016G21KT 15SM
BKN011 15/12 A2954 RMK SC7 SLP007
DENSITY ALT 1000FT

[Radar](#)

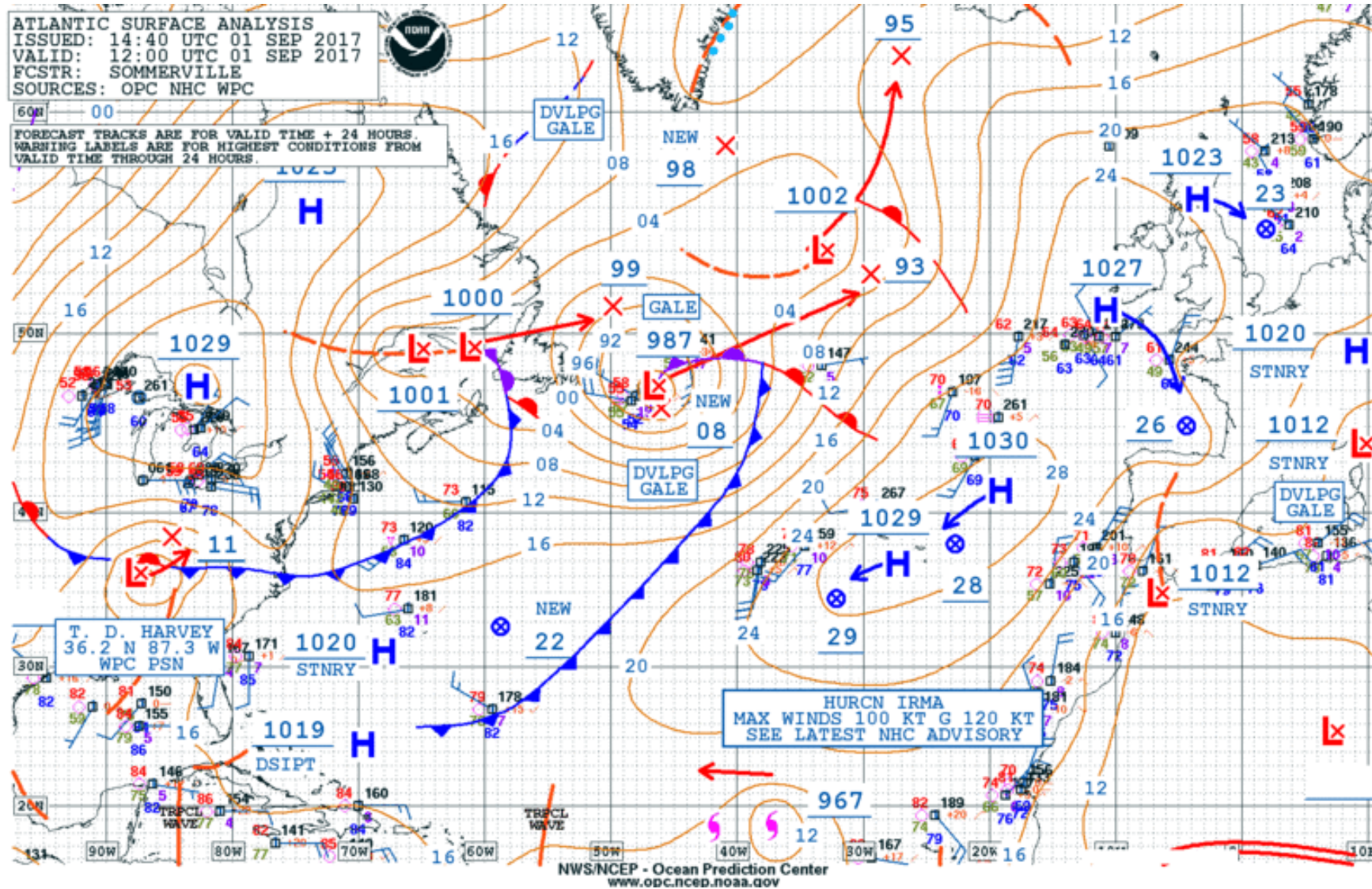
[Satellite](#)

[WunderMap](#) | [Nexrad](#)



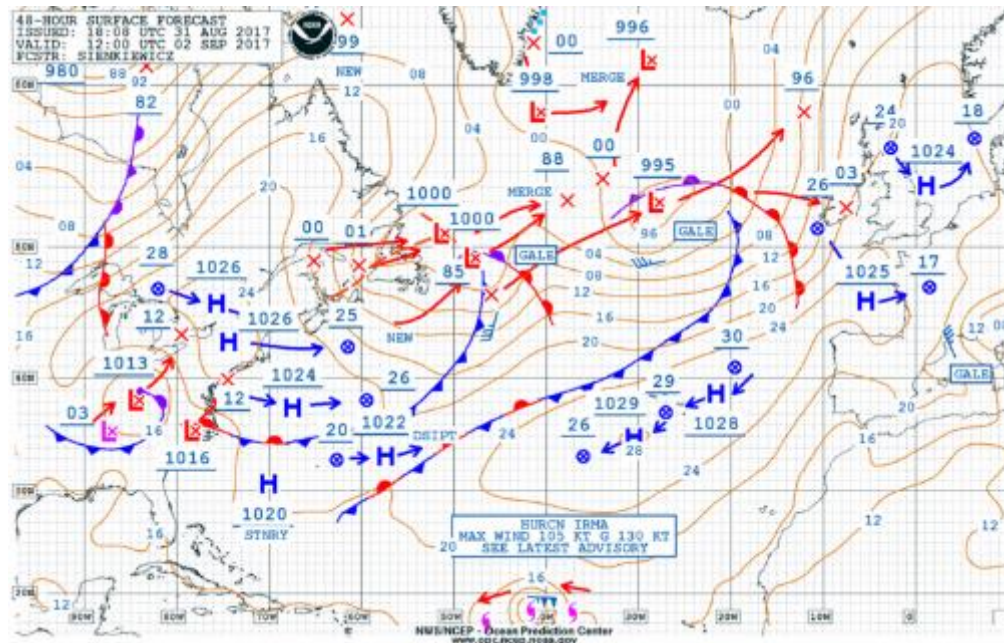
☐ Show Webcams

Surface Analysis

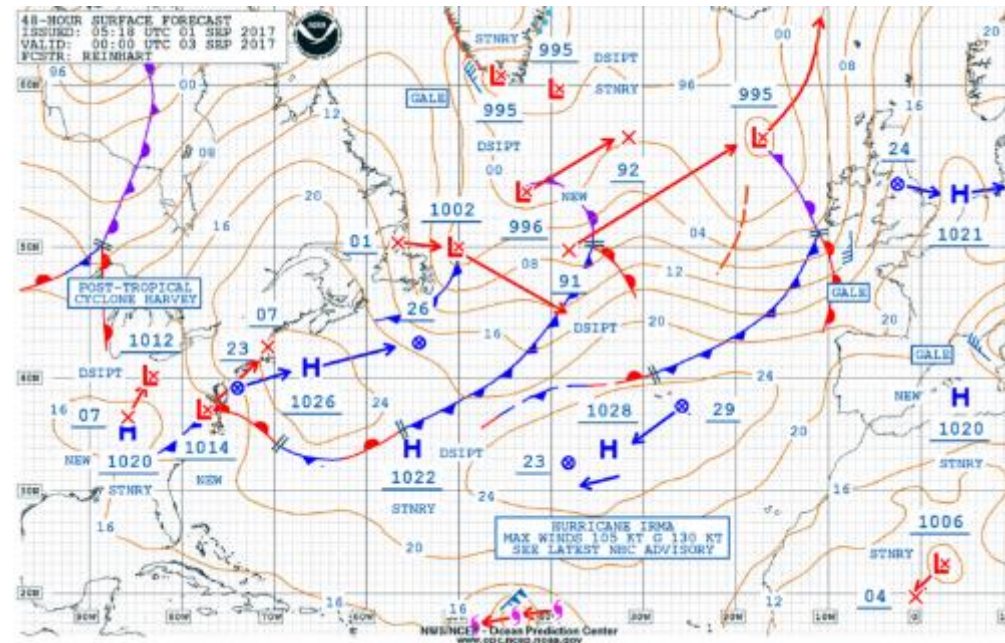


Synoptic Forecast

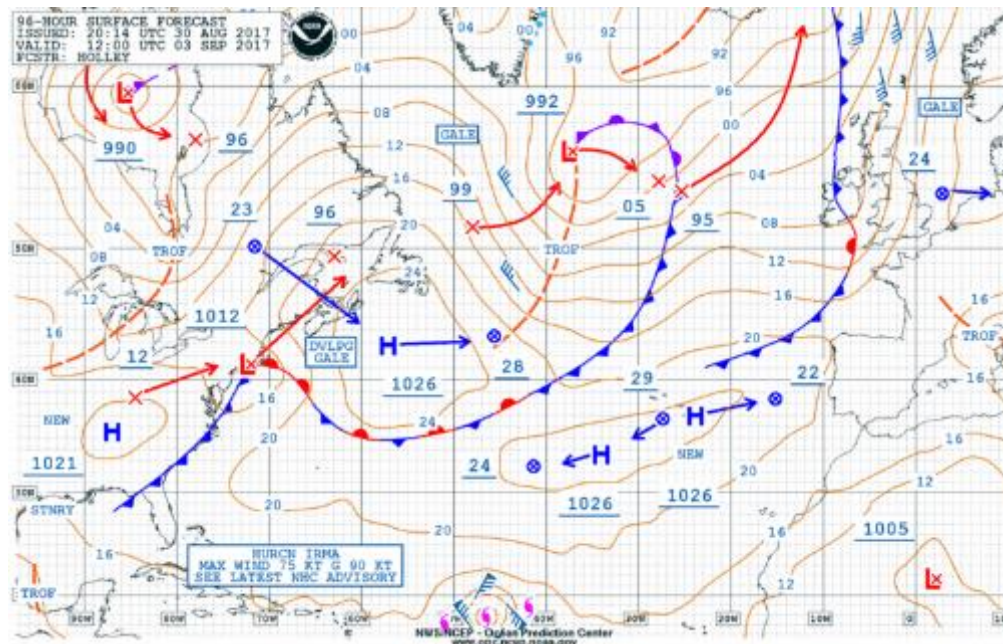
Saturday 9:30 am NDT



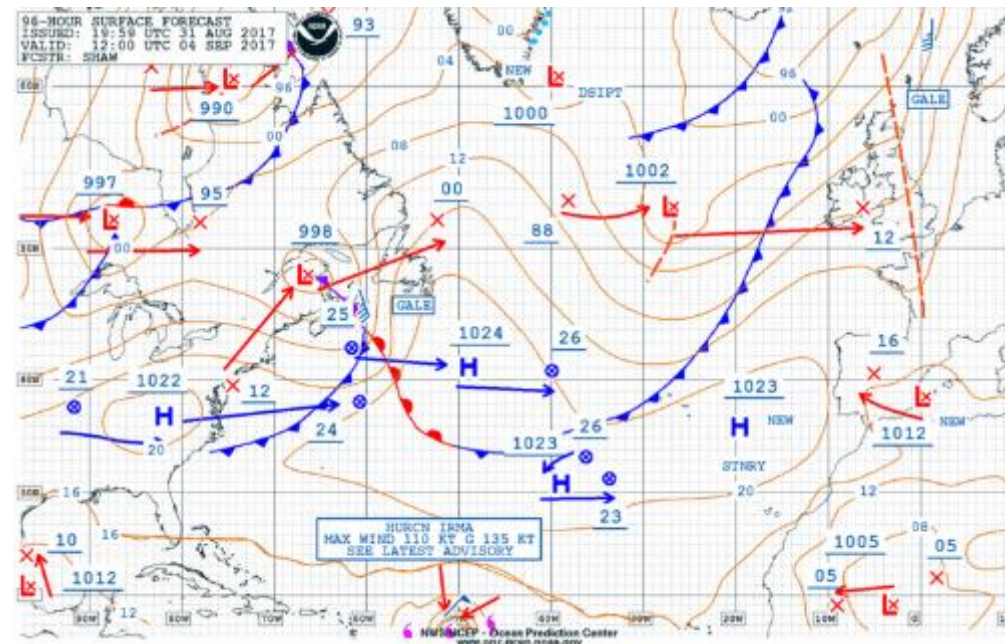
Saturday 9:30 pm NDT



Sunday 9:30 am NDT

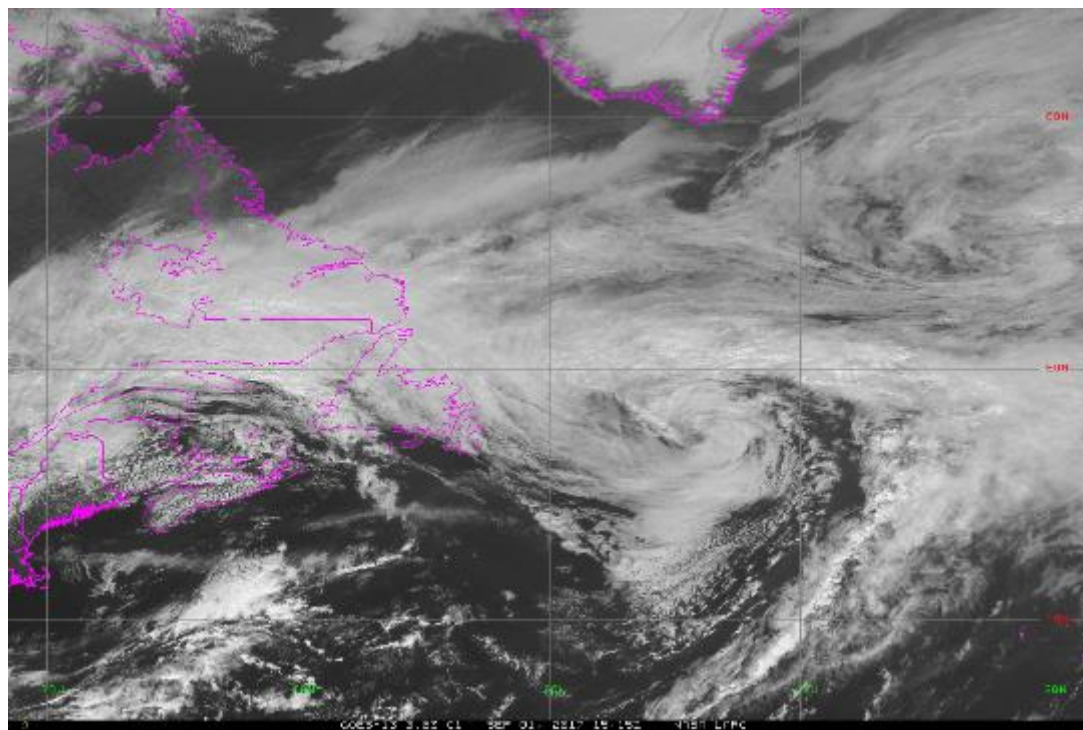


Monday 9:30 am NDT

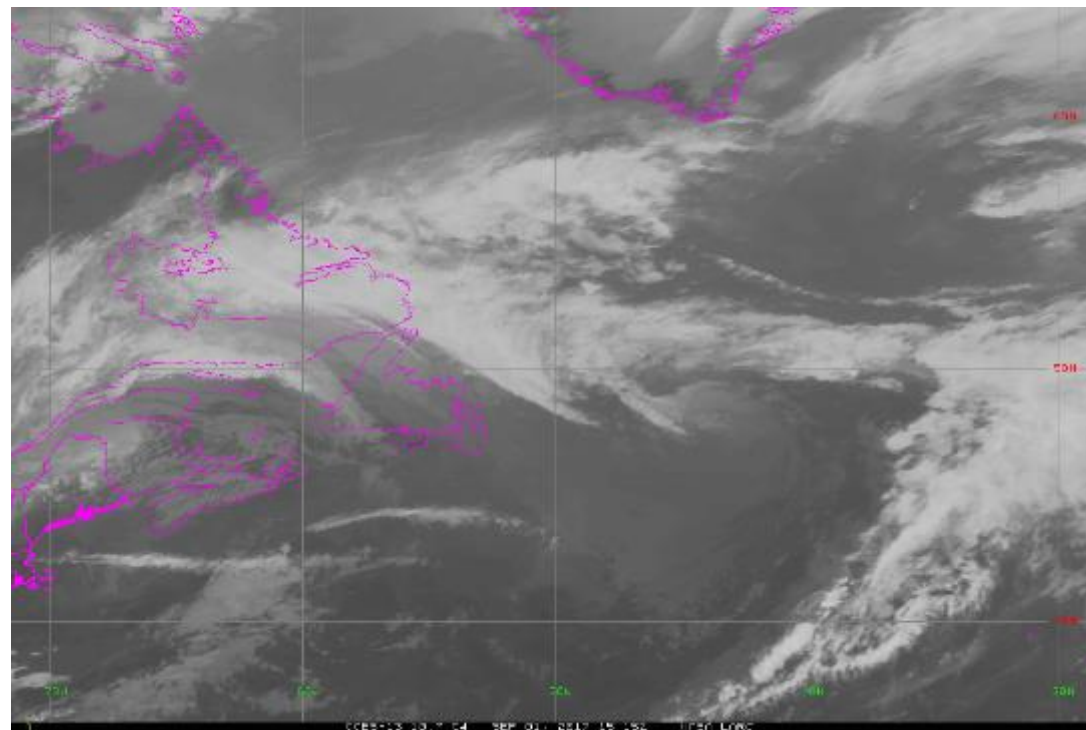


GOES-13 Imagery (9/1 15:15 UTC)

Visible

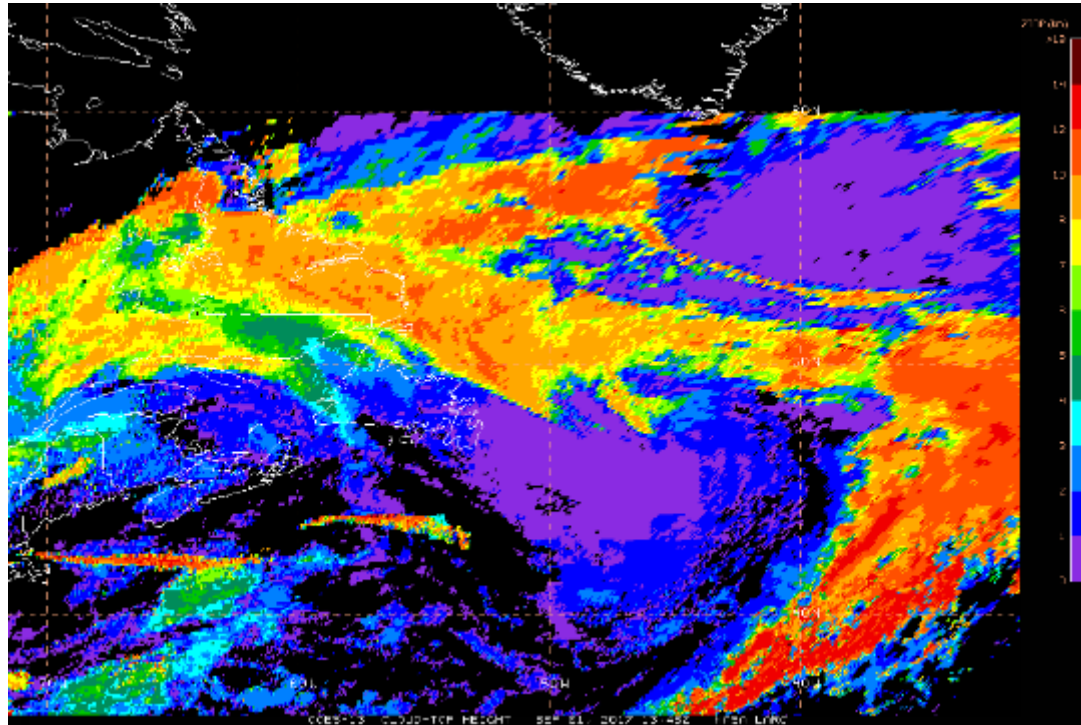


IR

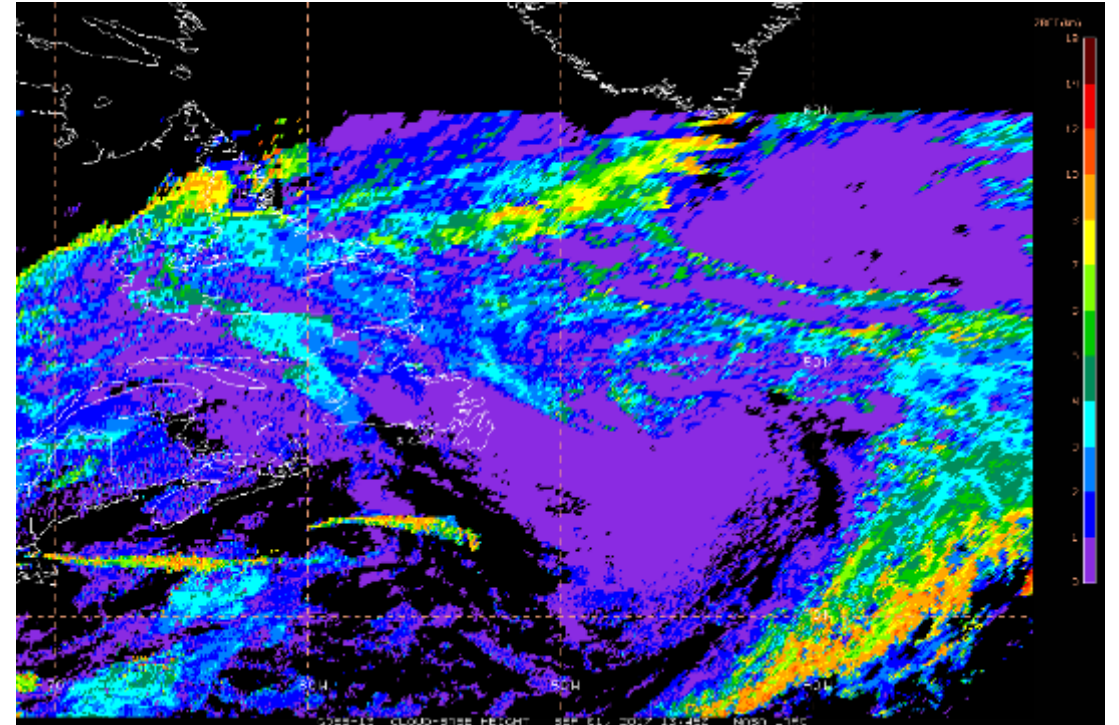


Cloud Products (9/1 13:45Z)

Cloud Top Height



Cloud Base Height



|ECMWF| 4-Panel Cloud Forecast

4-panel Cloud Cover (%)

06 hour forecast valid 06Z Fri, SEP 01, 2017

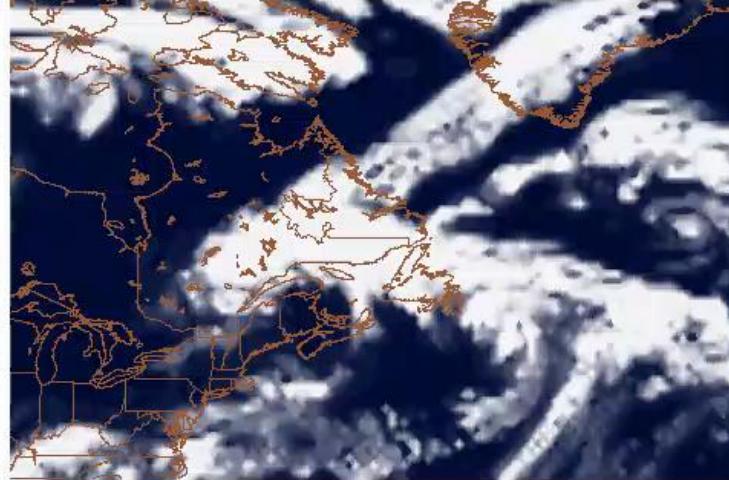
ECMWF Deterministic initialized 00Z Fri, SEP 01, 2017

AccuWeather Professional

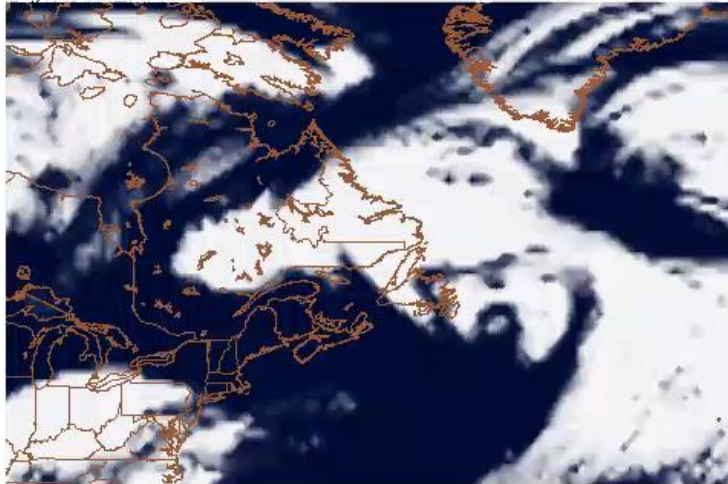
Low level Clouds



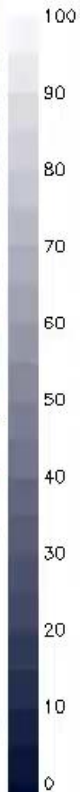
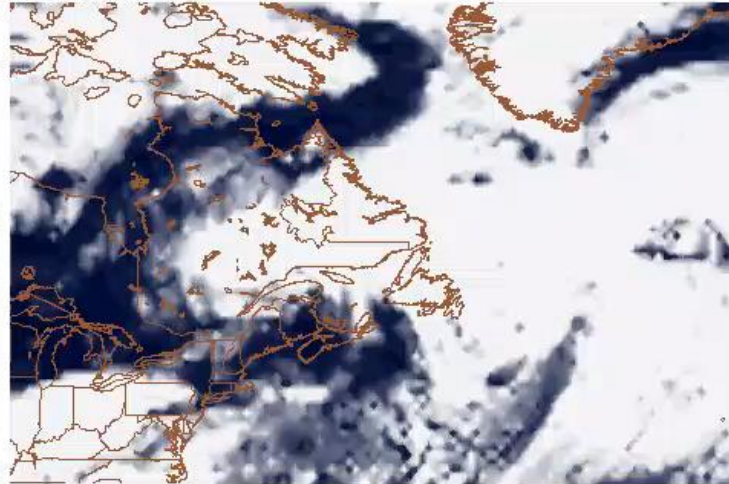
Mid level Clouds



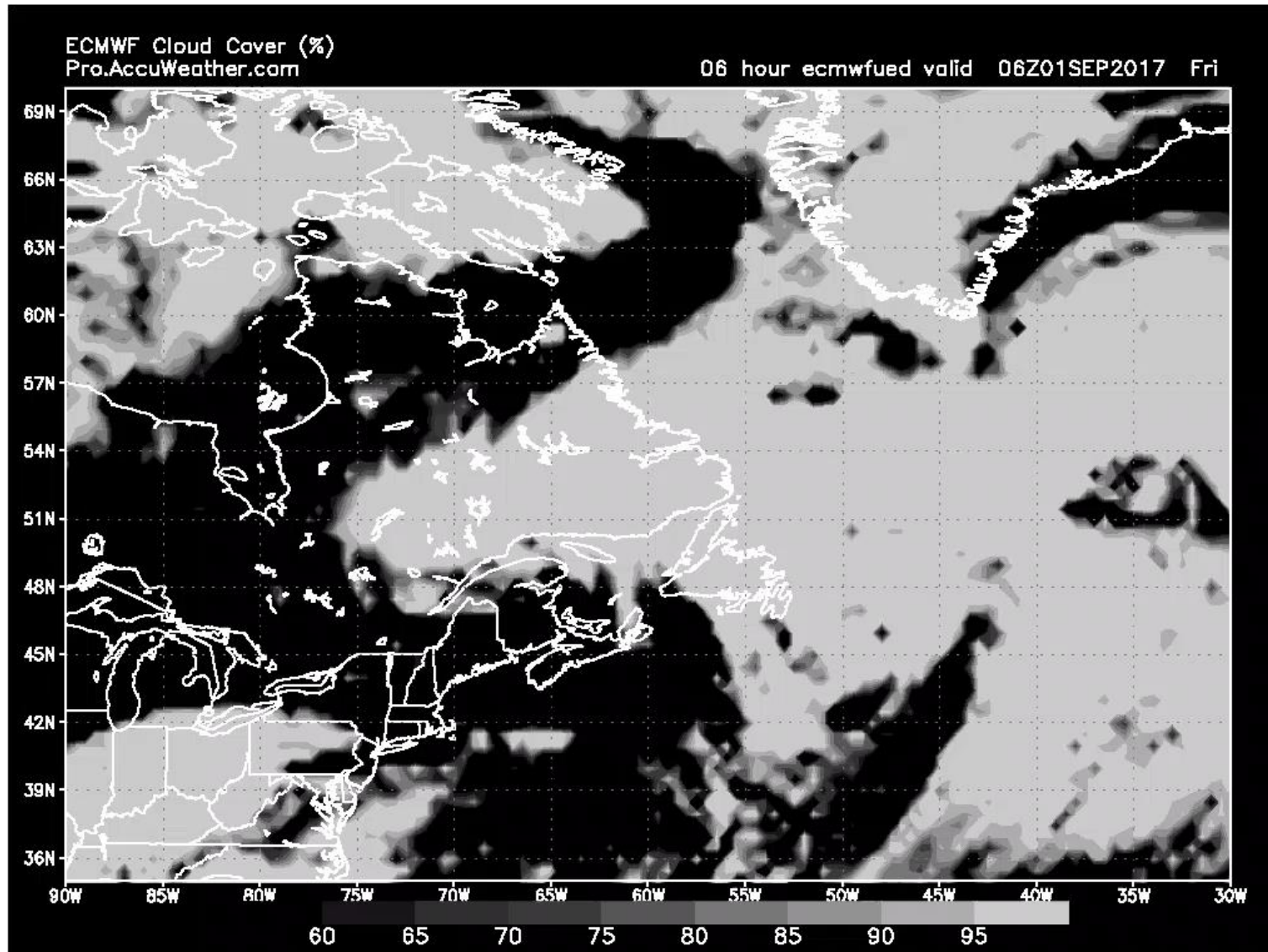
High level Clouds



Total Clouds



|ECMWF| Total Cloud Forecast

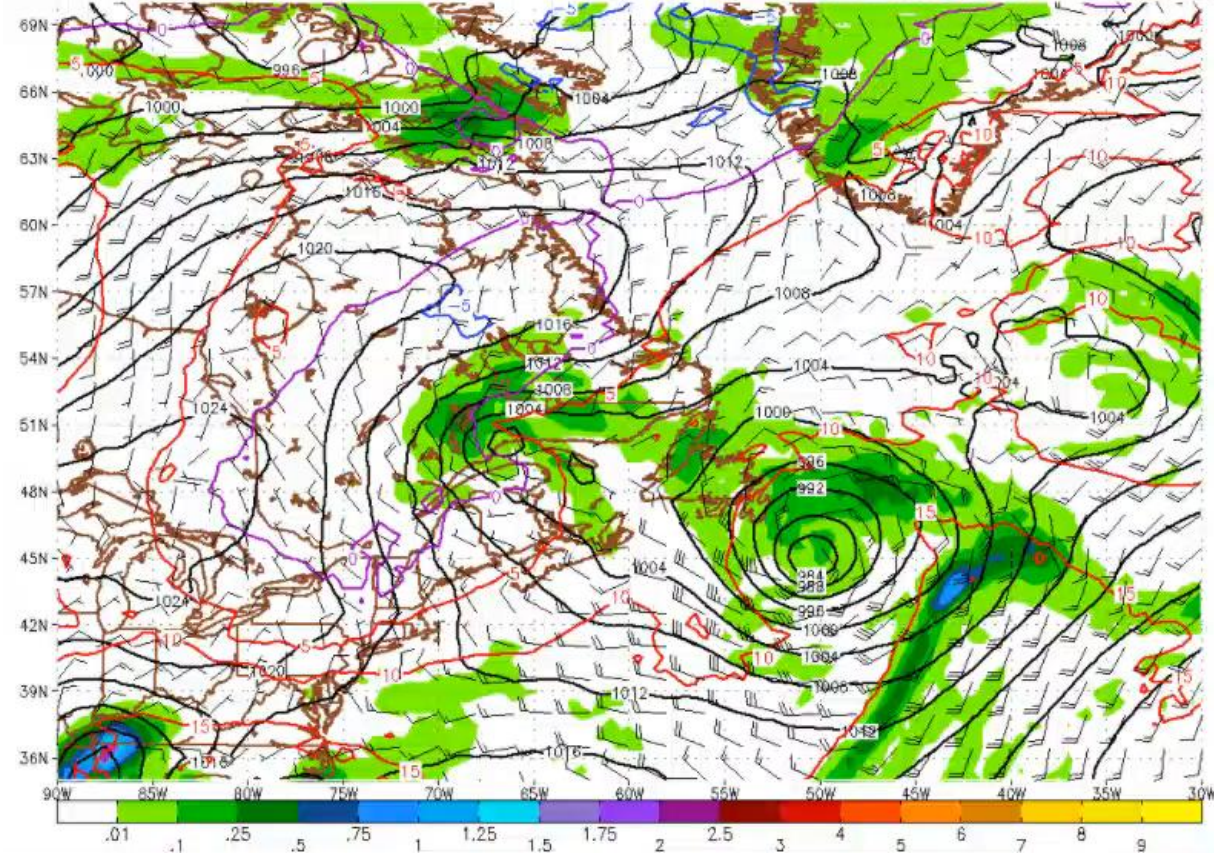


MSLP, 850 mb temp, 6 hour QPF, 10 m wind

6 hour QPF (inches)

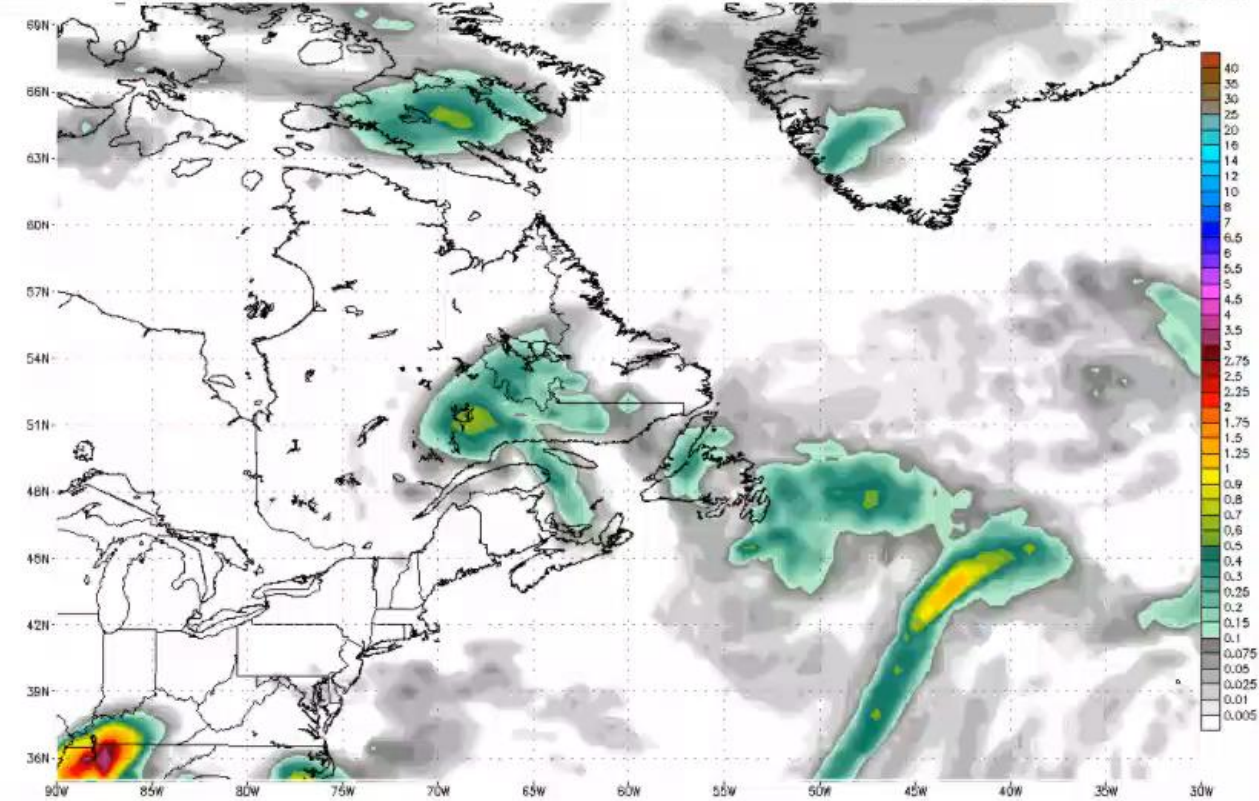
MSLP(mb), 850mb temp(C), 3-hour QPF(in) and 10m wind(kt)
06 hour forecast valid 06Z Fri, SEP 01, 2017
ECMWF Deterministic initialized 00Z Fri, SEP 01, 2017

AccuWeather Professional



6-hour QPF (inches)
06 hour forecast valid 06Z Fri, SEP 01, 2017
ECMWF Deterministic initialized 00Z Fri, SEP 01, 2017

AccuWeather Professional

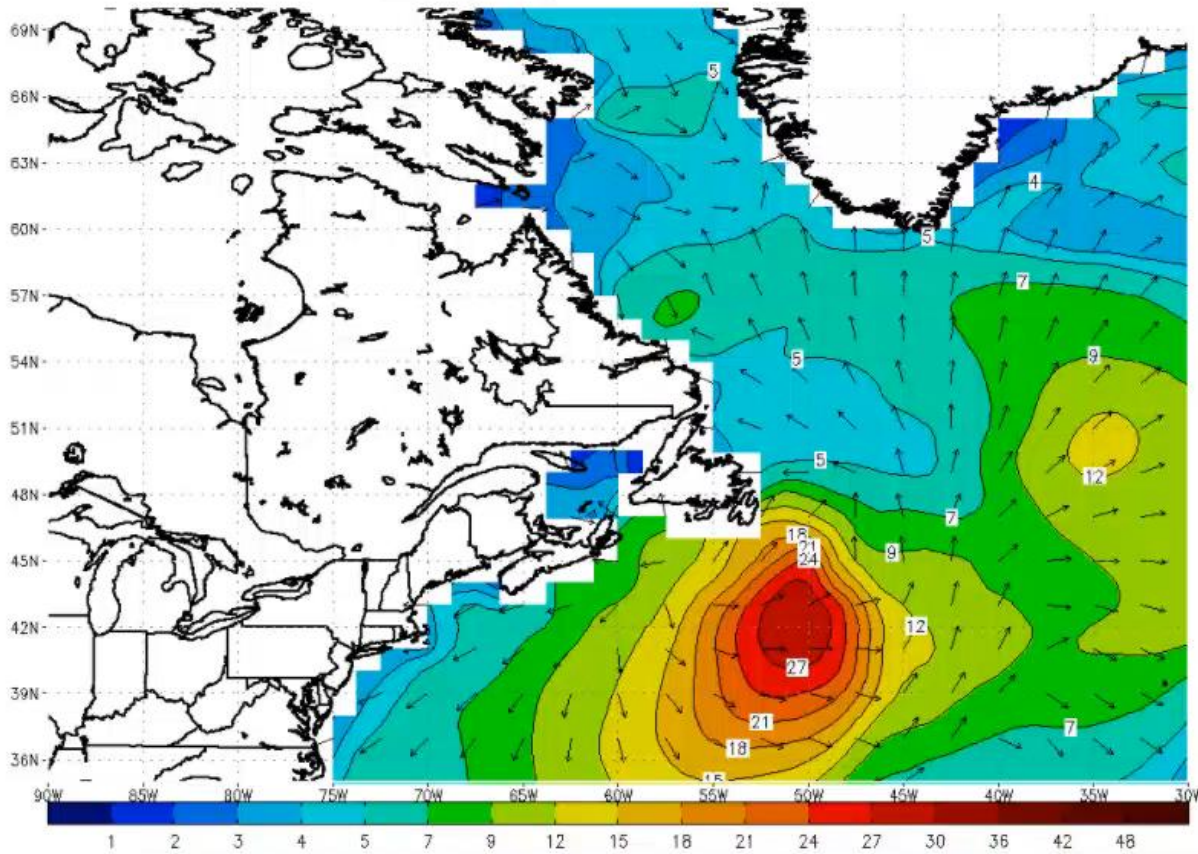


Wave height (ft)

Winds (knots)

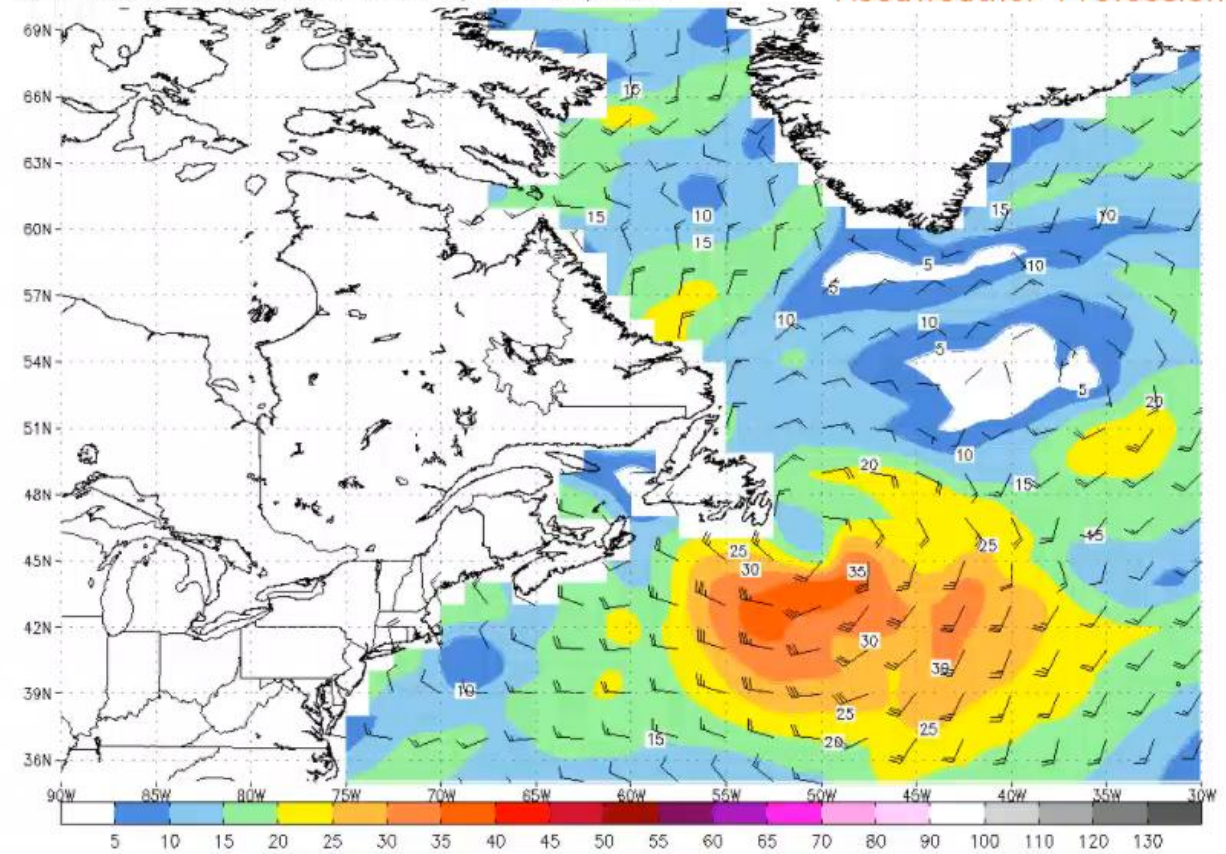
Significant Height of Waves and Swell (ft) and Direction
06 hour forecast valid 06Z Fri 01 SEP 2017
Wave Watch III initialized 00Z Fri 01 SEP 2017

Pro.AccuWeather.com



Surface Wind Speed (kts) and Wind Barbs
06 hour forecast valid 06Z Fri, SEP 01, 2017
Wave Watch III initialized 00Z Fri, SEP 01, 2017

AccuWeather Professional

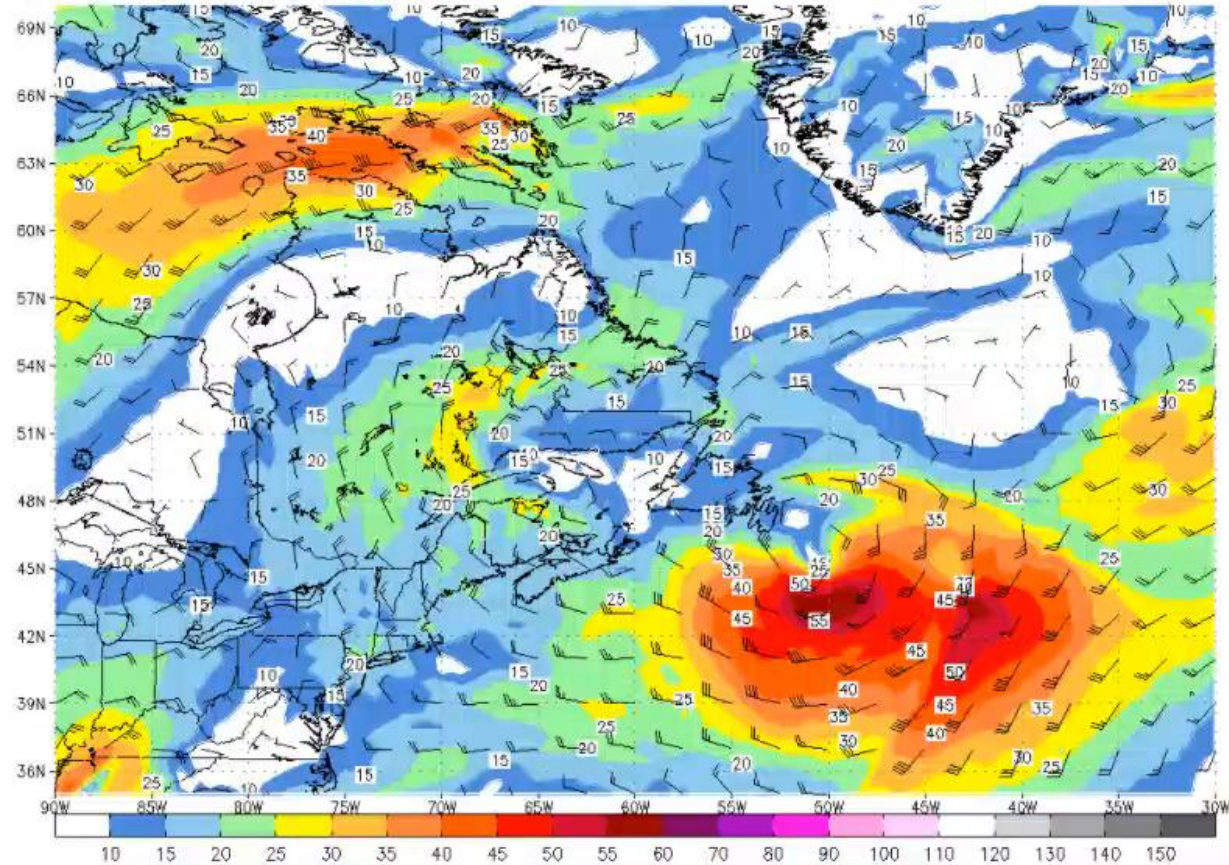


1000-850 mb Height and Winds

Surface to ~ 1.5 km or 5000 ft AMSL

Mean wind 1000mb-850mb (knots)
06 hour forecast valid 06Z Fri, SEP 01, 2017
ECMWF Deterministic initialized 00Z Fri, SEP 01, 2017

AccuWeather Professional

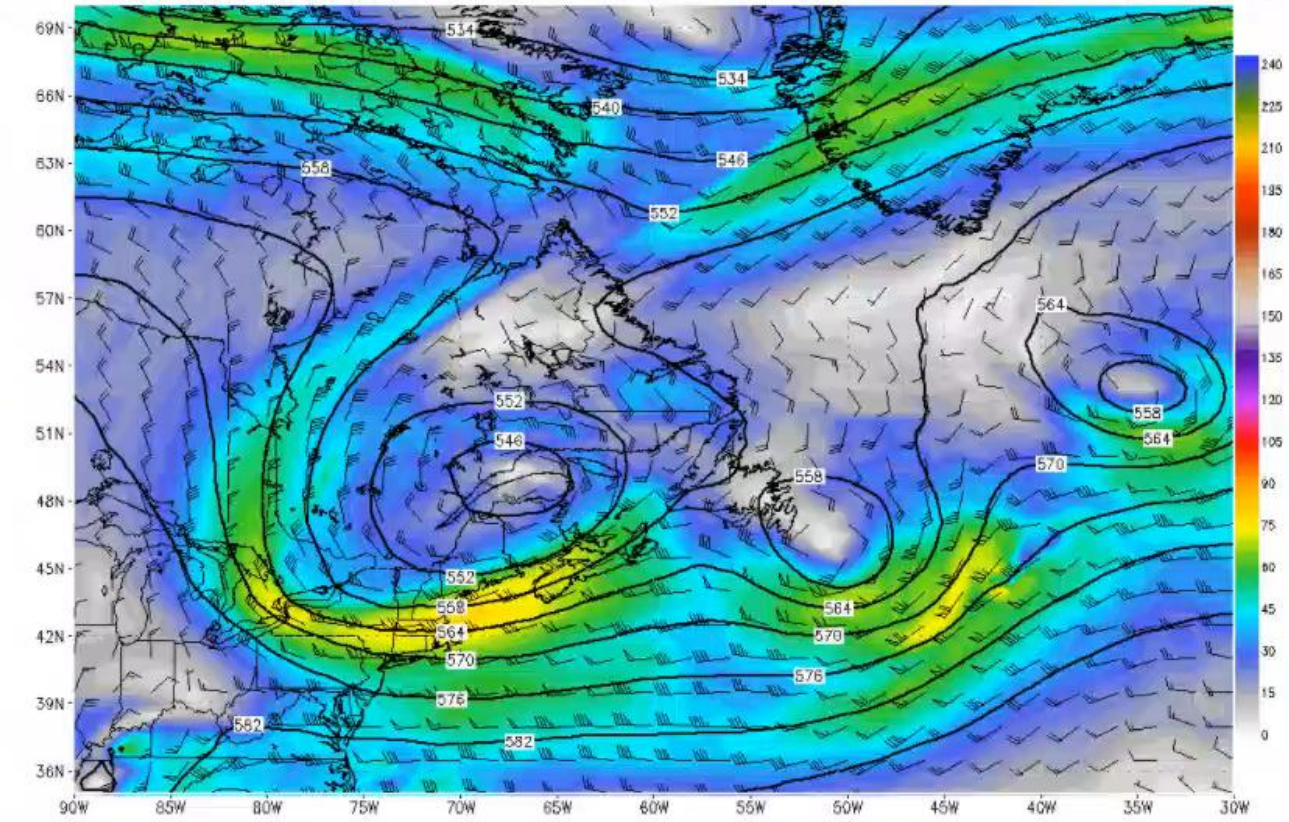


500 mb Height and Winds

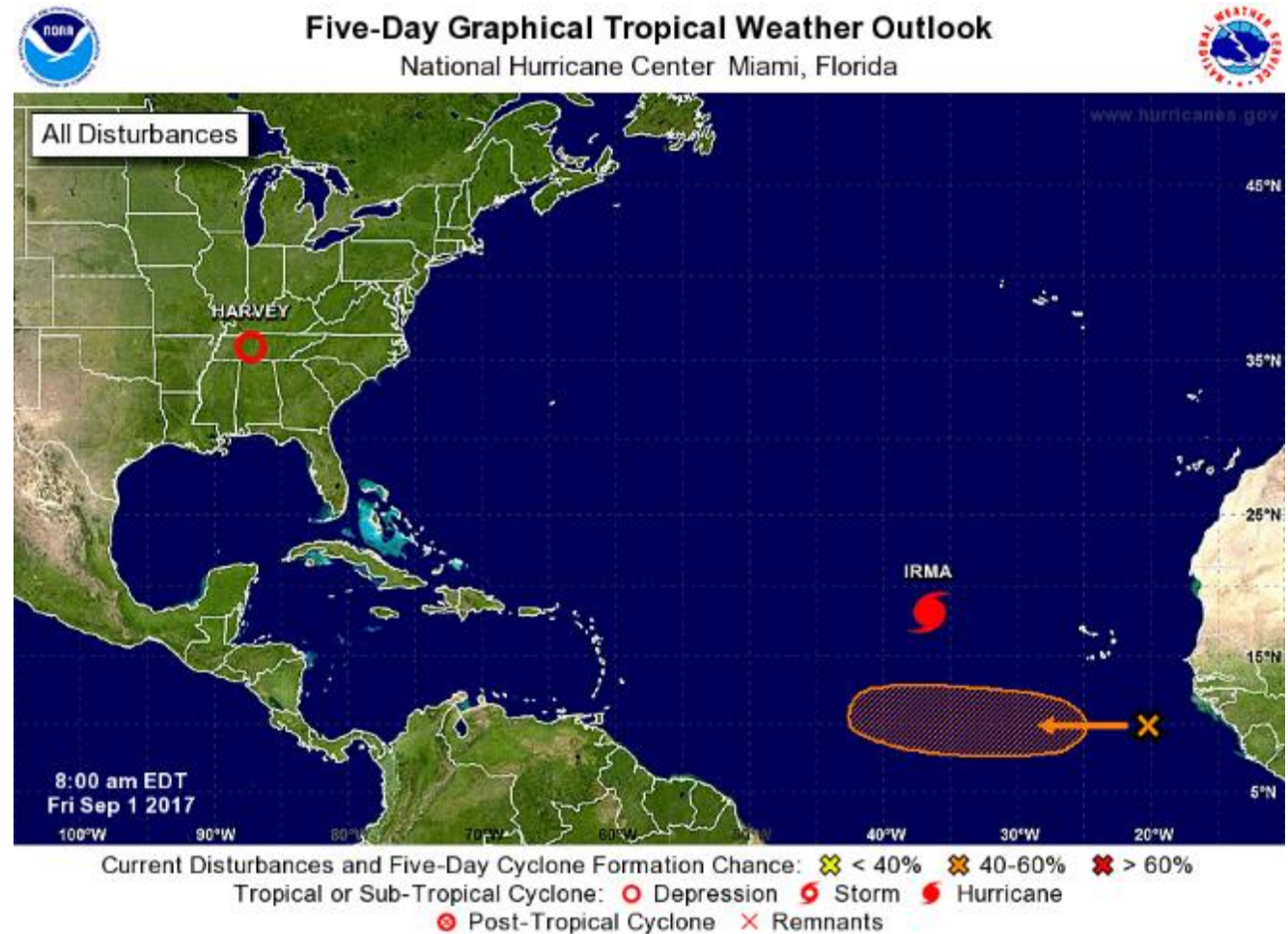
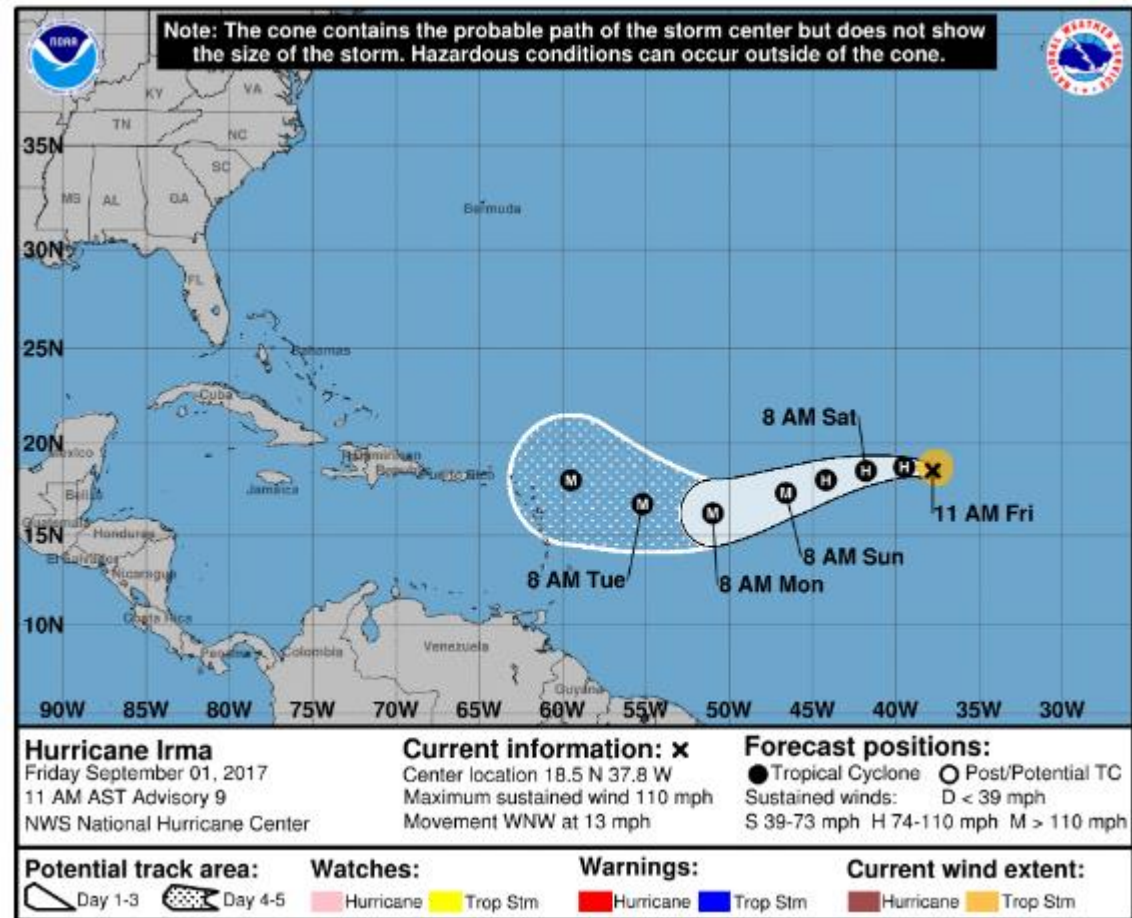
~ 5.5 km or 18,000

500 MB Height and Winds (knots)
06 hour forecast valid 06Z Fri, SEP 01, 2017
ECMWF Deterministic initialized 00Z Fri, SEP 01, 2017

AccuWeather Professional



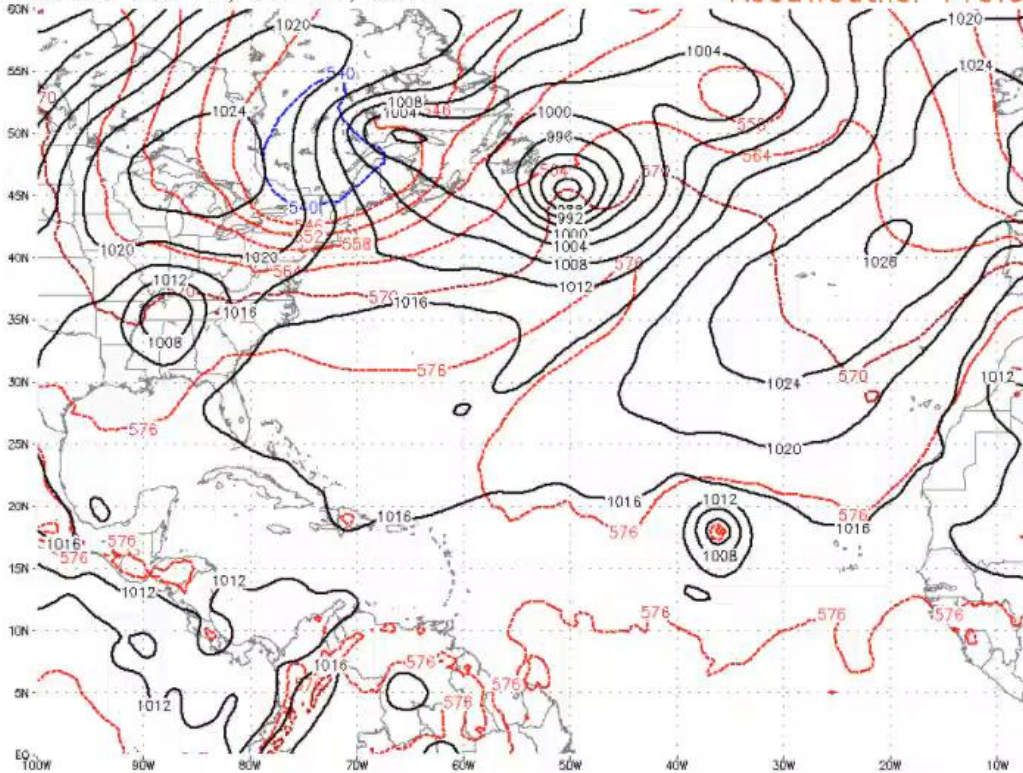
Eye on the Tropics - Outlook



Eye on the Tropics

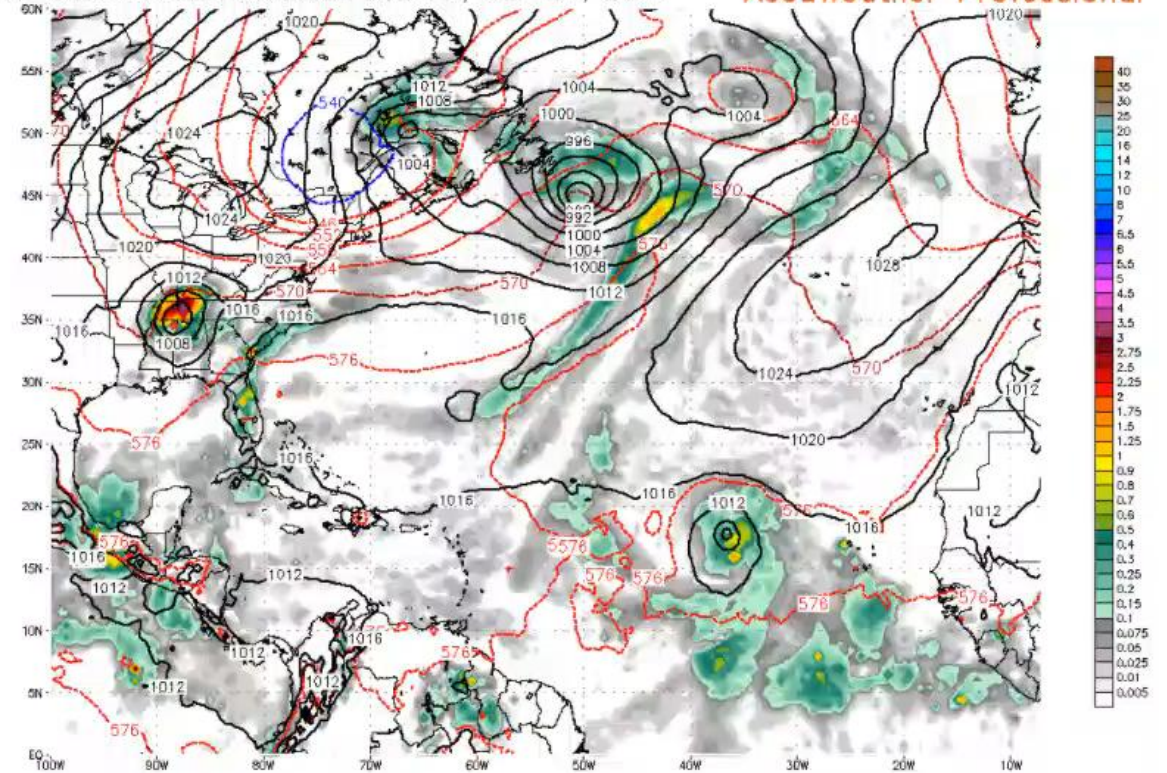
MSLP (mb), 1000–500 thickness (DM) and 00-hour QPF (inches)
00 hour forecast valid 06Z Fri, SEP 01, 2017
GFS initialized 06Z Fri, SEP 01, 2017

AccuWeather Professional



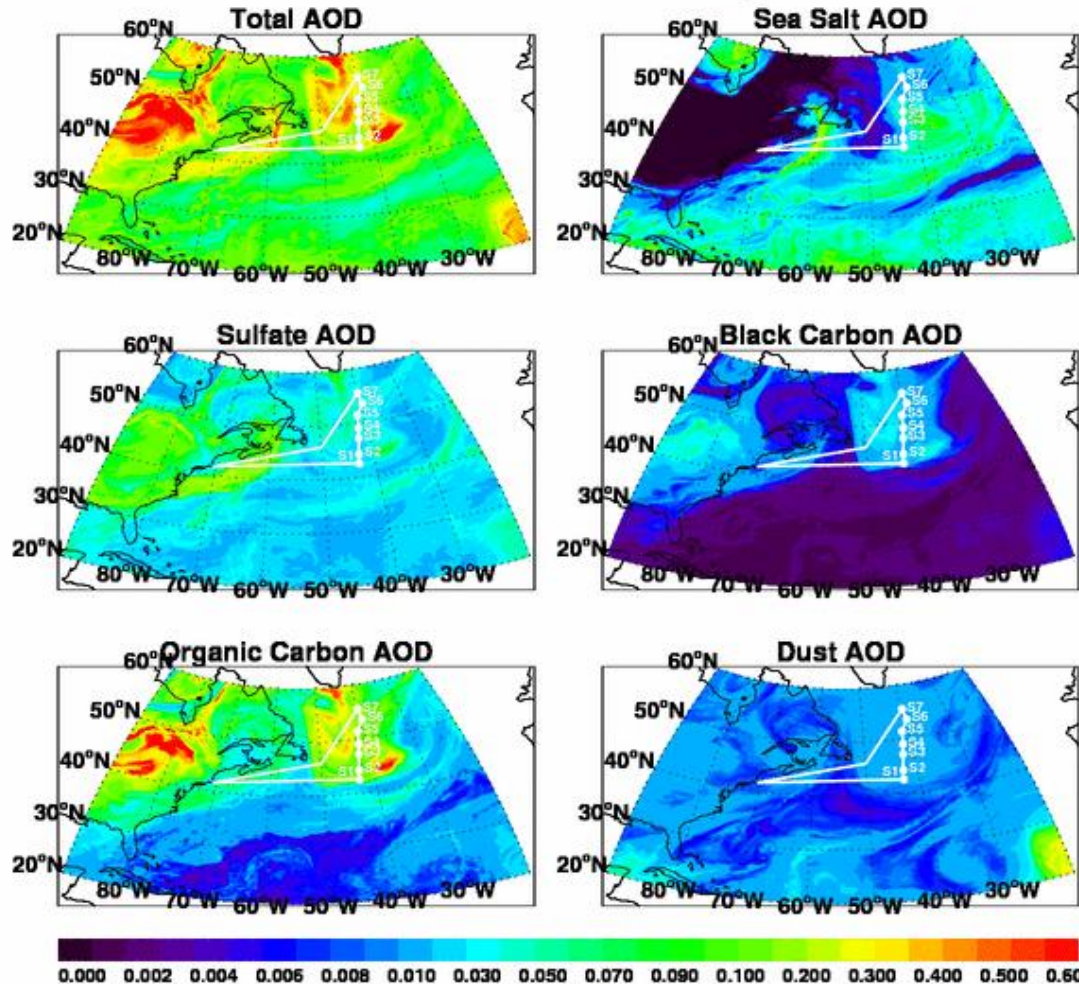
MSLP (mb), 1000–500 thickness (DM) and 6-hour QPF (inches)
06 hour forecast valid 06Z Fri, SEP 01, 2017
ECMWF Deterministic initialized 00Z Fri, SEP 01, 2017

AccuWeather Professional

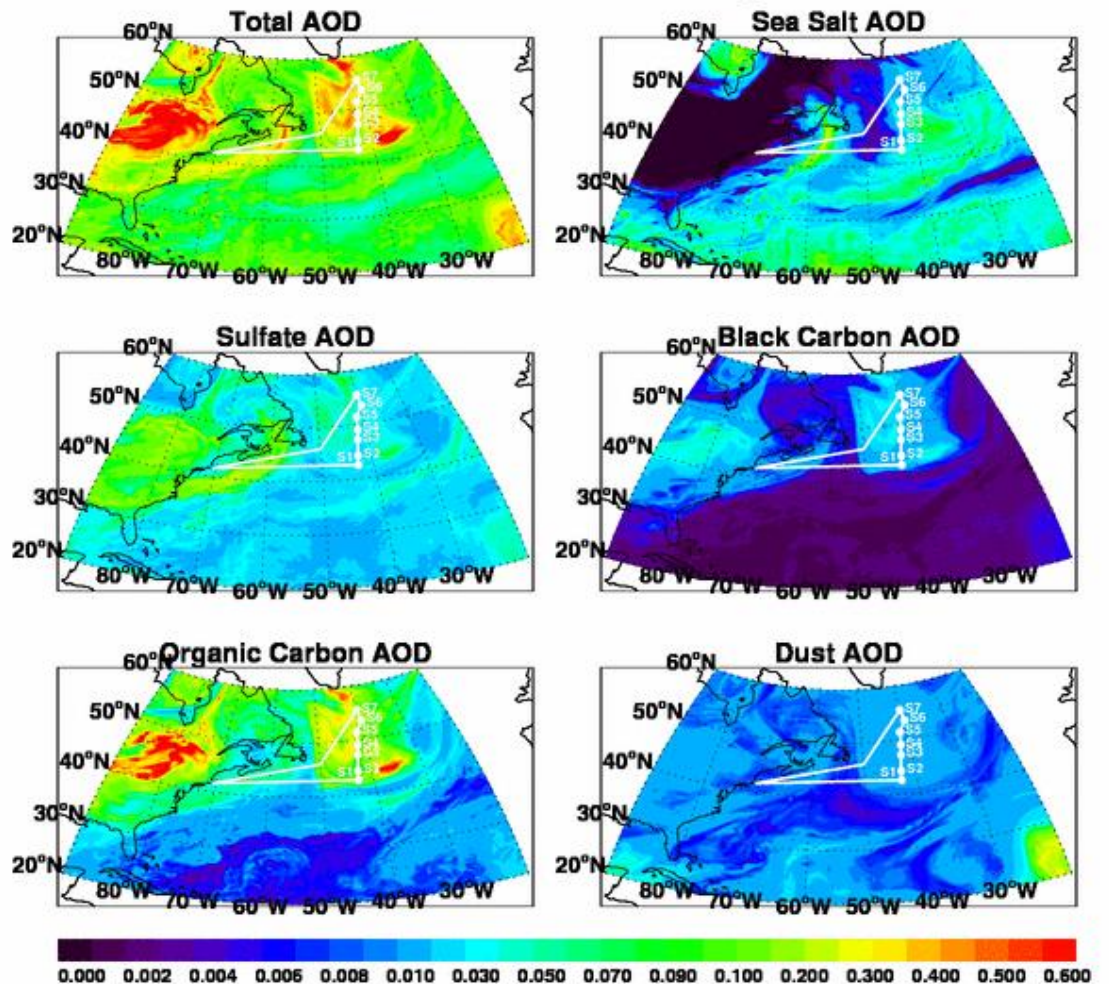


GEOS-Chem – 9/4 15 & 18 UTC Forecast

GEOS-FP Forecast 20170904_1500Z



GEOS-FP Forecast 20170904_1800Z



GEOS-Chem – 9/5 15 & 18 UTC Forecast

