

# **NAAMES**

# **WX Briefing**

**Monday, April 2, 2018**

Amy Jo Scarino

# Forecast Highlights

- **Model agreement:** Models agree out to Friday, disagreement on end of week/next weekend systems coming off East Coast out to sea
- **Next system:** Tuesday night into Wednesday night, sea state will kick up with the storm in the vicinity
- **Ship:** Relatively calm today and into Tuesday, will kick up with the next system, calm for Thursday into Friday, but timing of next frontal passage will kick up winds as starting to head back to WHOI
- **St. John's:** Partly cloudy and windy to start the week, chilly mornings/evenings, Wednesday night & Thursday will bring a wintry mix, with snow/ice accumulation 3-5". Those getting early flights home will want to consider this forecast.

# Forecast Summary – Ship Options

Day	St. John's	Ship	Ship Weather
Day 1 Tuesday 4/3	Partly cloudy Morning low: 24; High: 31 Winds: NW 10-20 mph	In vicinity of S2	Waves: NW 5-7 ft Winds: SW 15-20 kts Clouds: Partly to mostly cloudy Precip: no daytime, overnight rain showers
Day 2 Wednesday 4/4	Partly cloudy -> <b>windy &amp; wintry mix</b> overnight Morning low: 22; High: 37 Winds: W 10-15 mph -> <b>S 25-35 mph</b>	At S2	<b>Waves: NW 10-14 ft</b> <b>Winds: NW 20-25 kts</b> Clouds: Partly to mostly cloudy Precip: none
Day 3 Thursday 4/5	Overcast, windy, <b>freezing rain</b> Morning low: 27; High: 49 <b>Winds: S 25-35 mph</b>	In vicinity between S2 and S1	<b>Waves: N 10-14 ft</b> Winds: NW 10-15 kts Clouds: Mostly cloudy Precip: none
Day 4 Friday 4/6	Mostly sunny & windy Morning low: 29; High: 36 Winds: W 25-35 mph	At S1	<b>Waves: NE 9-12 ft</b> <b>Winds: SW 18-22 kts</b> Clouds: Mostly cloudy Precip: none, overnight rain showers
Day 5 Saturday 4/7	Overcast, windy, <b>wintry mix</b> Morning low: 26; High: 37 Winds: S->WSW 25-35 mph	Transit to WHOI	Waves: NE 9-12 ft <b>Winds: SE to S 22-28 kts</b> Clouds: Mostly to partly cloudy Precip: none
Day 6 Sunday 4/8	Mostly cloudy Morning low: 27; High: 34 Winds: WSW 18-20 mph	Transit to WHOI	<b>Waves: W 10-14 ft</b> Winds: variable 5-15 kts Clouds: Overcast Precip: Scattered rain showers

# Ship Route Forecast

## Sunday, 4/8

Waves: W 10-14 ft  
Winds: variable 5-15 kts  
Clouds: Overcast  
Precip: Scattered rain showers

## Friday, 4/6

Waves: NE 9-12 ft  
Winds: SW 18-22 kts  
Clouds: Mostly cloudy  
Precip: none, overnight rain showers

## Saturday, 4/7

Waves: NE 9-12 ft  
Winds: SE to S 22-28 kts  
Clouds: Mostly to partly cloudy  
Precip: none

## Thursday, 4/5

Waves: N 10-14 ft  
Winds: NW 10-15 kts  
Clouds: Mostly cloudy  
Precip: none

## Wednesday, 4/4

Waves: NW 10-14 ft  
Winds: NW 20-25 kts  
Clouds: Partly to mostly cloudy  
Precip: none

## Monday, 4/2

Waves: NW 9-12 ft  
Winds: NW to W 15-20 kts  
Clouds: Partly cloudy  
Precip: none

## Tuesday, 4/3

Waves: NW 5-7 ft  
Winds: SW 15-20 kts  
Clouds: Partly to mostly cloudy  
Precip: no daytime, overnight rain showers

N45°

43°

N41°

N39°

W41°

W39°

W37°

W35°

W33°

W31°

North Atlantic Ocean

Google Earth

R/V Atlantis

n0852

n0851

n0850

S1

S3

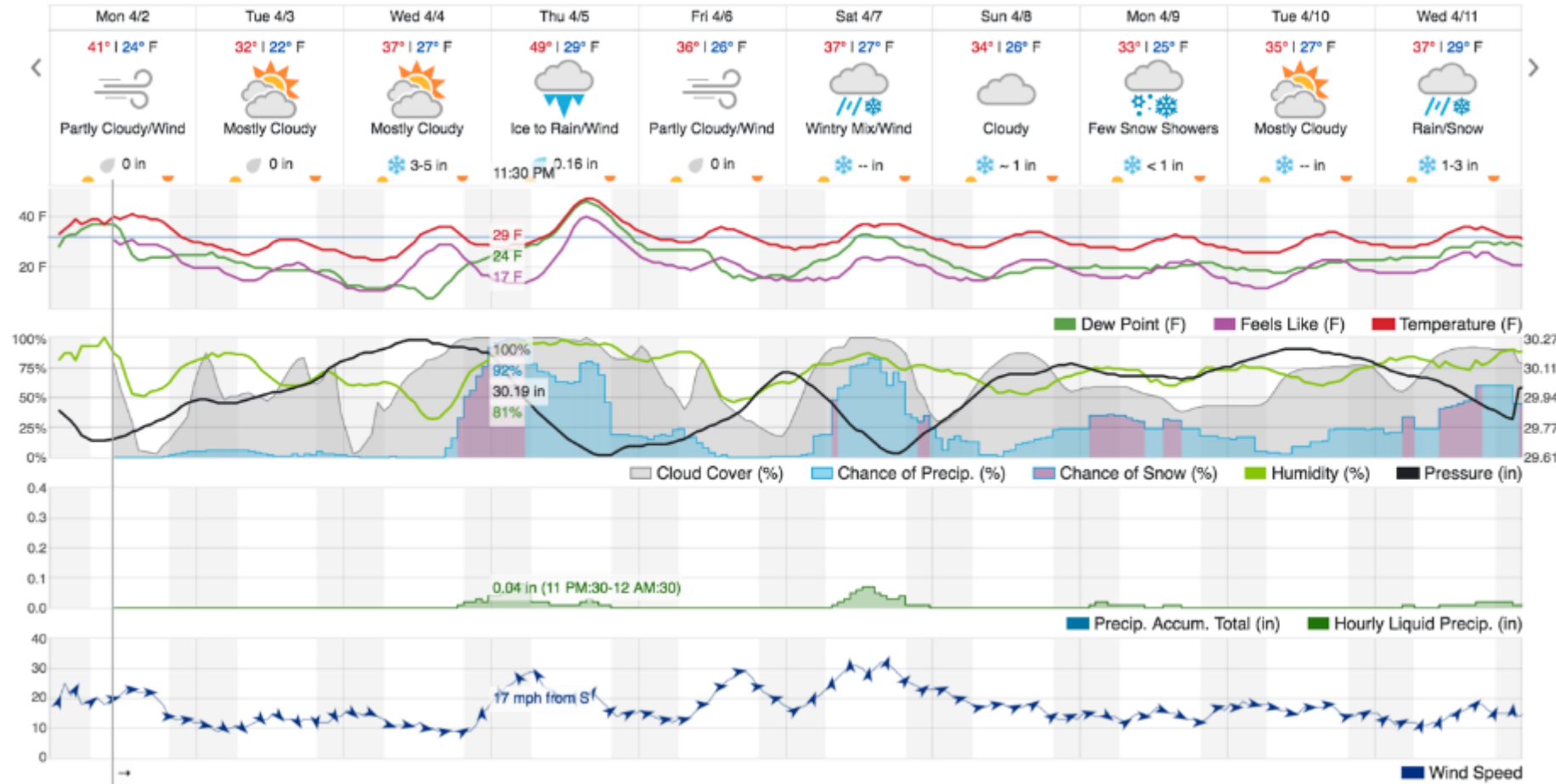
S4

S2

# St. John's - Current & Forecast

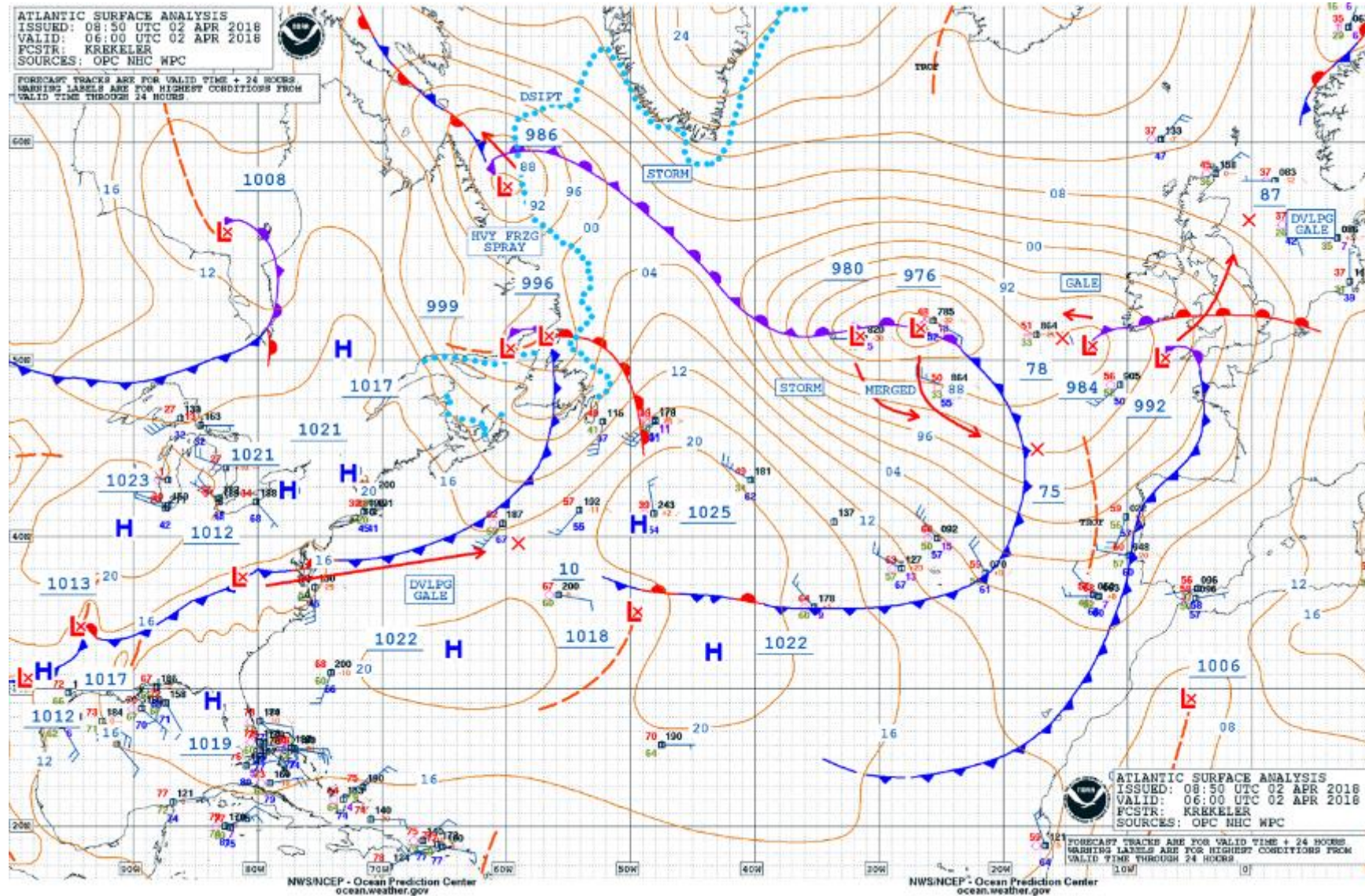


Wind West  
Gusts —



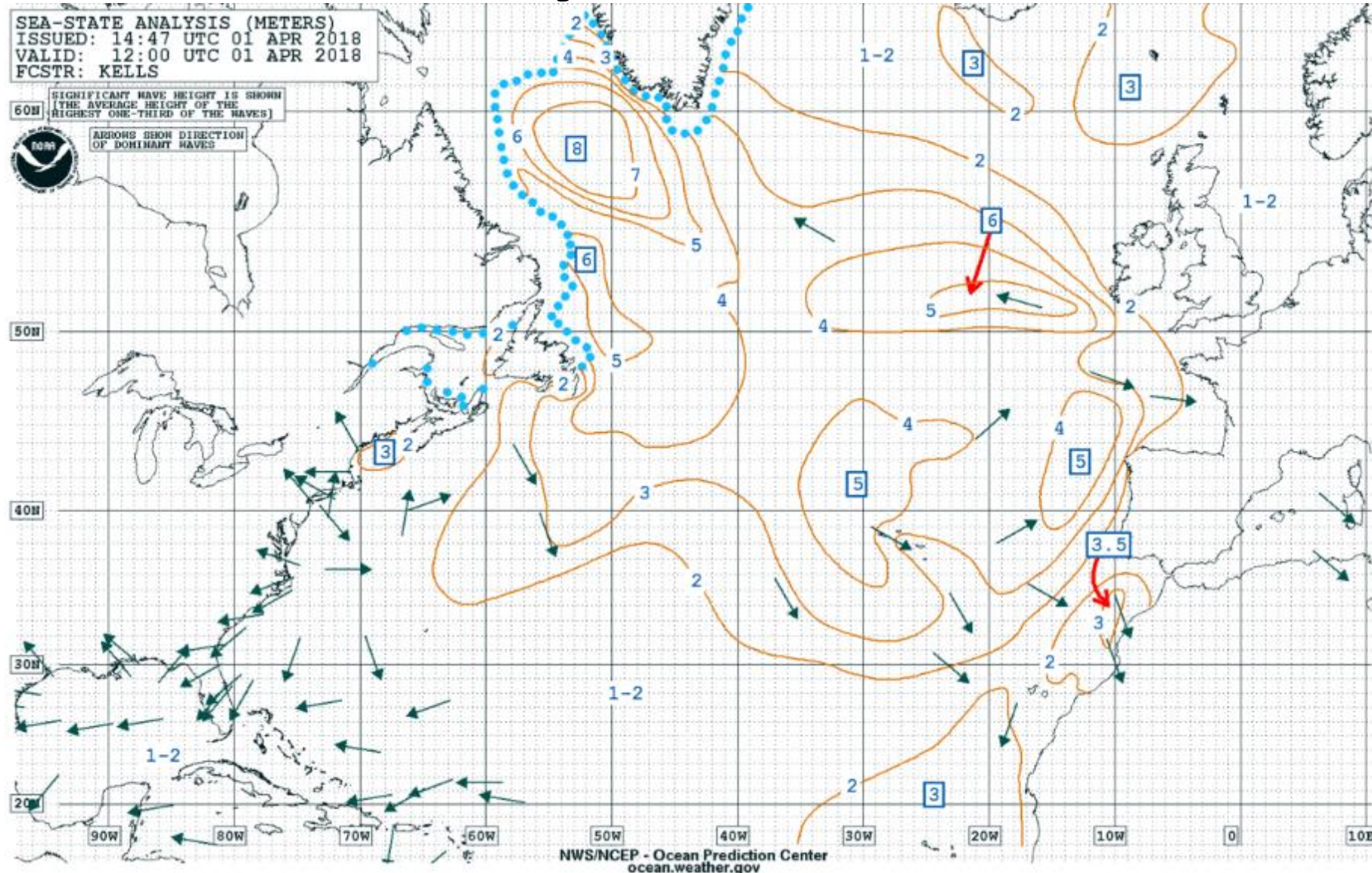


# Surface Analysis





# Sea State Analysis

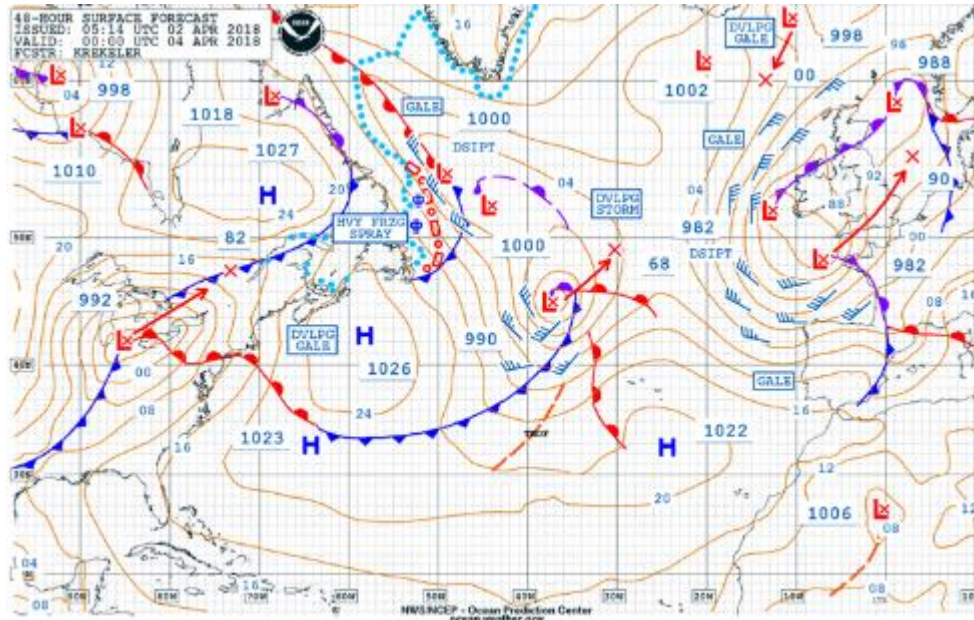


- Significant Wave Height is shown (in meters). This is the average height of the highest one-third of the waves
- Arrows show direction of dominant waves

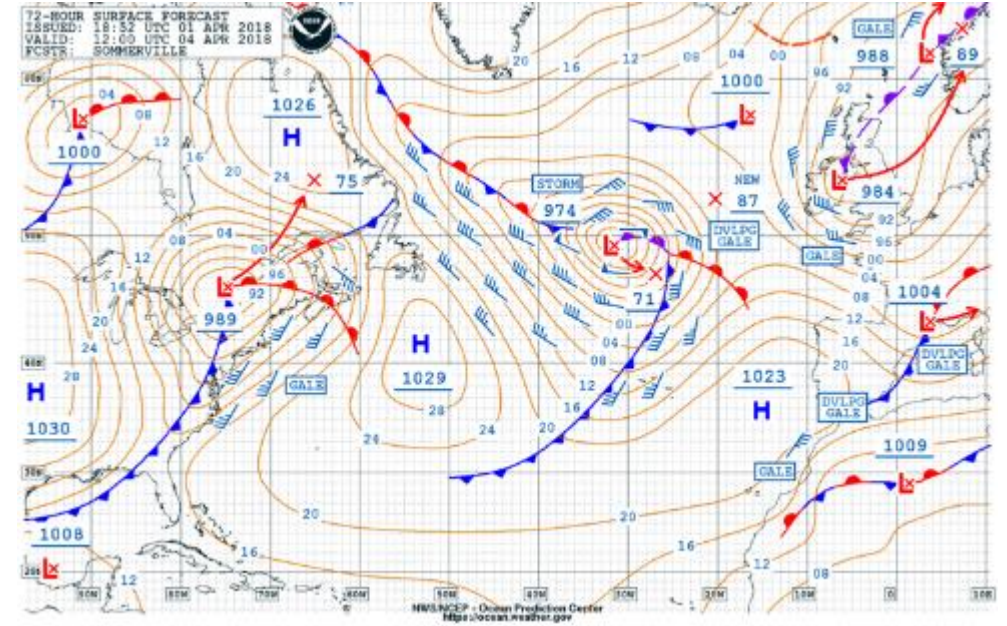


# Synoptic Forecast

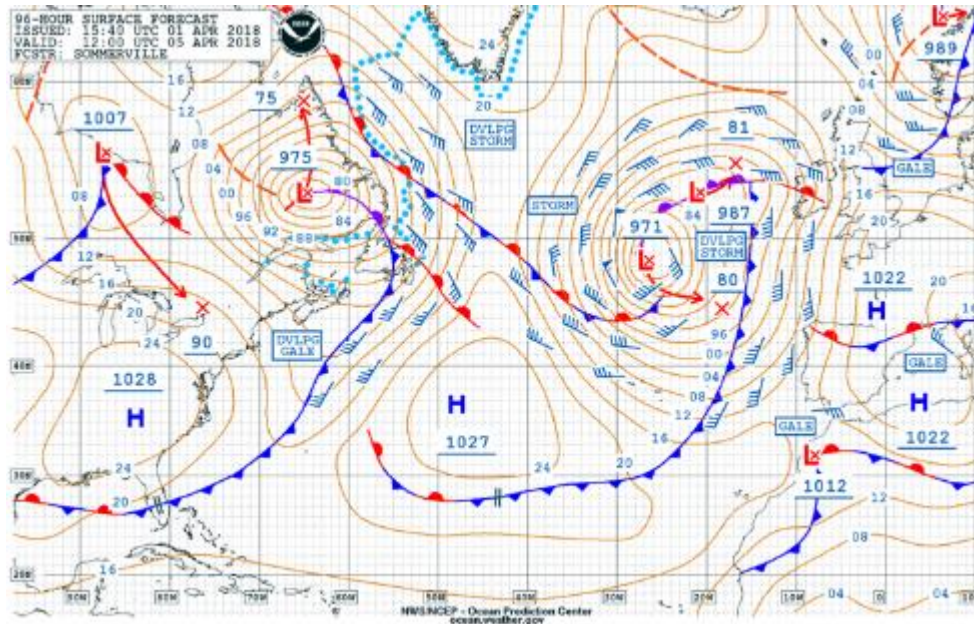
**48 hr Forecast: Tuesday 9:30pm NDT/10pm Ship**



**72 hr Forecast: Wednesday 9:30am NDT/10am Ship**



**96 hr Forecast: Thursday 9:30am NDT/10am Ship**

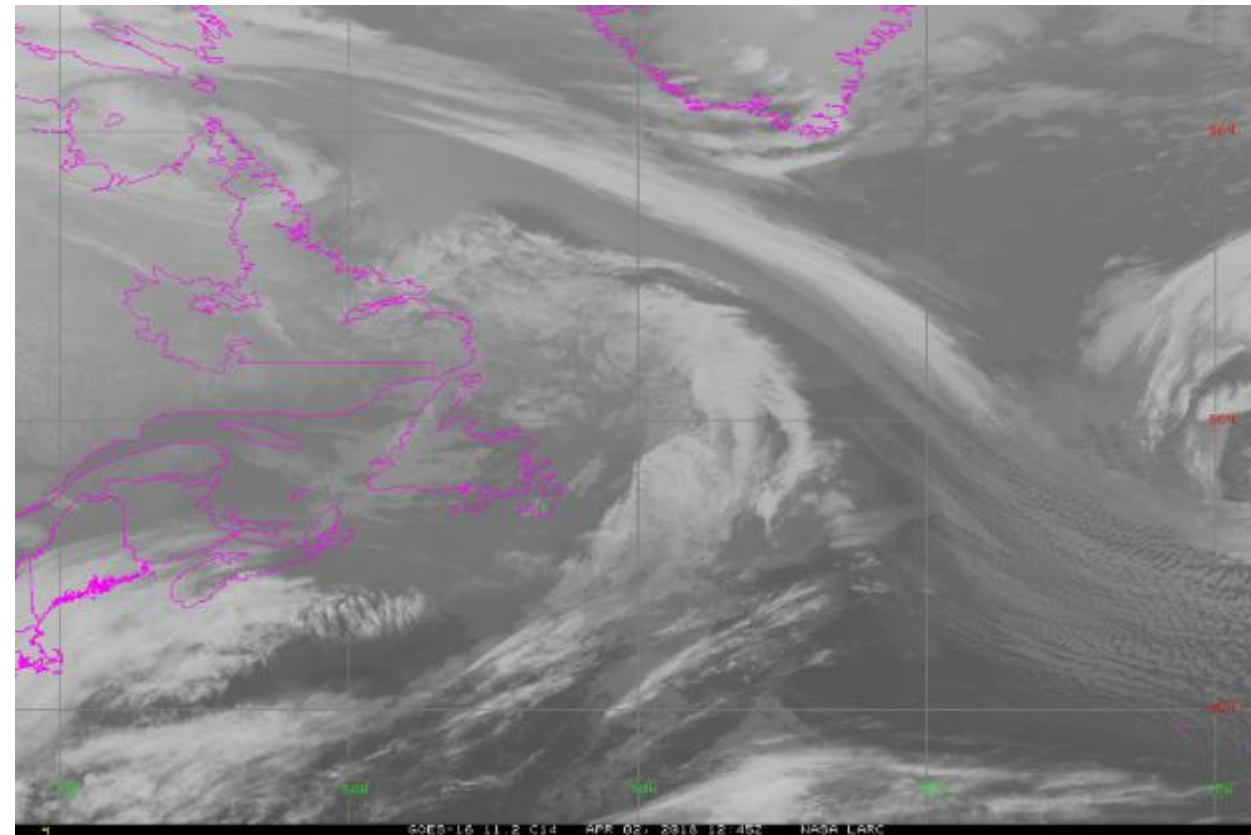
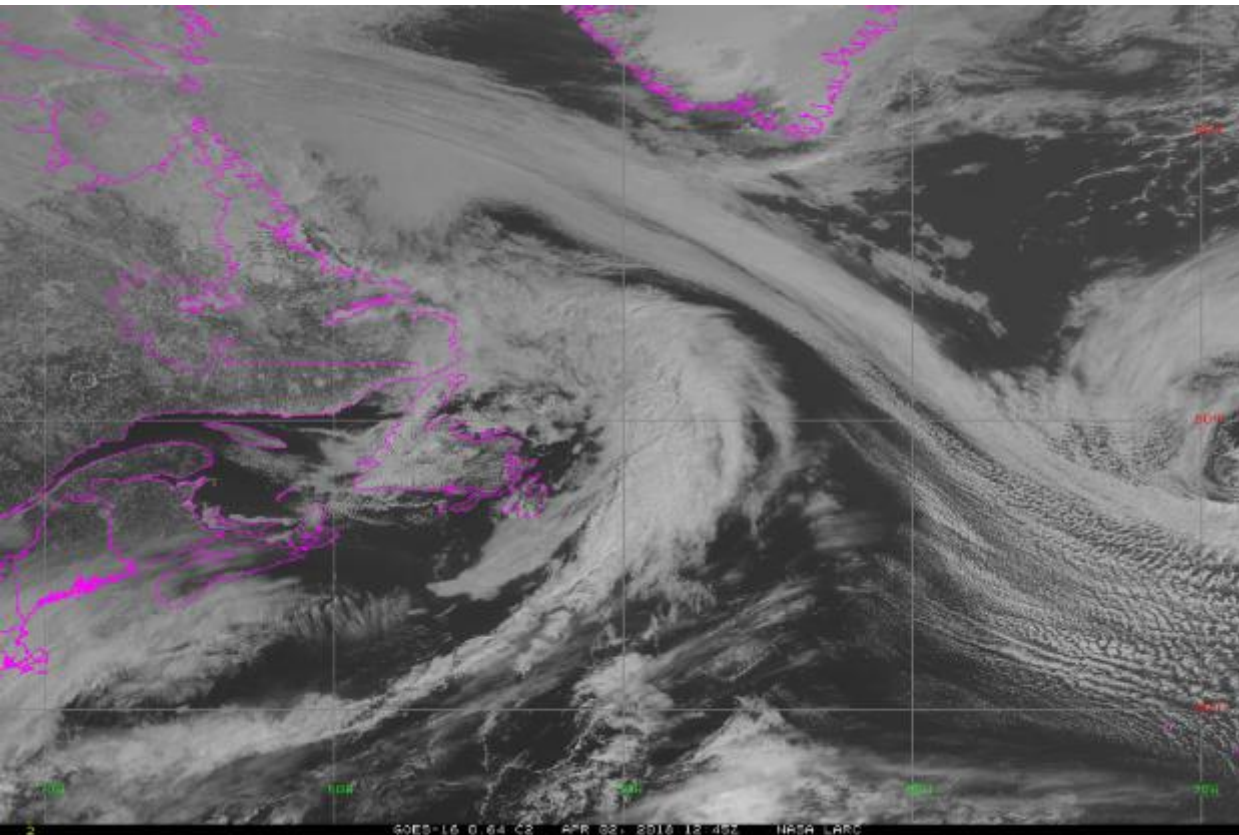




# GOES-16 Imagery (4/2 12:45 UTC)

Visible

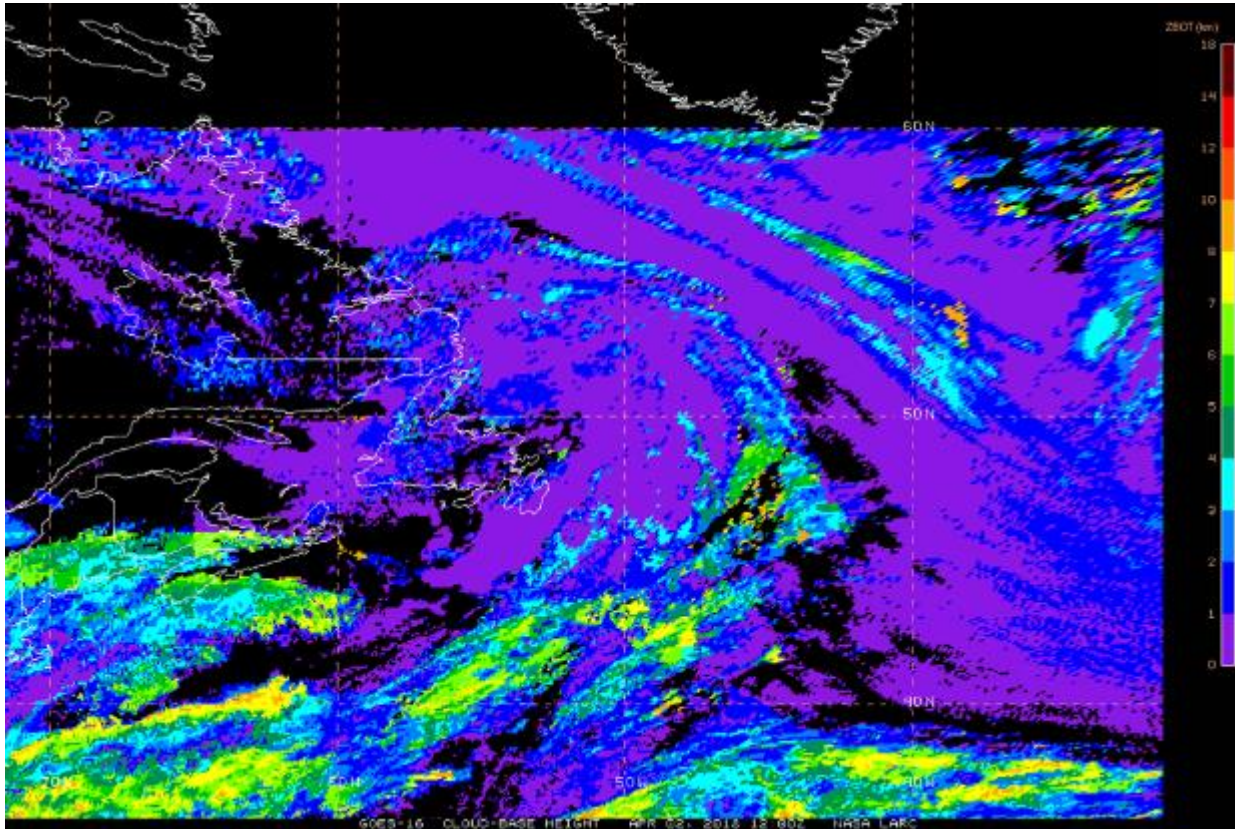
IR



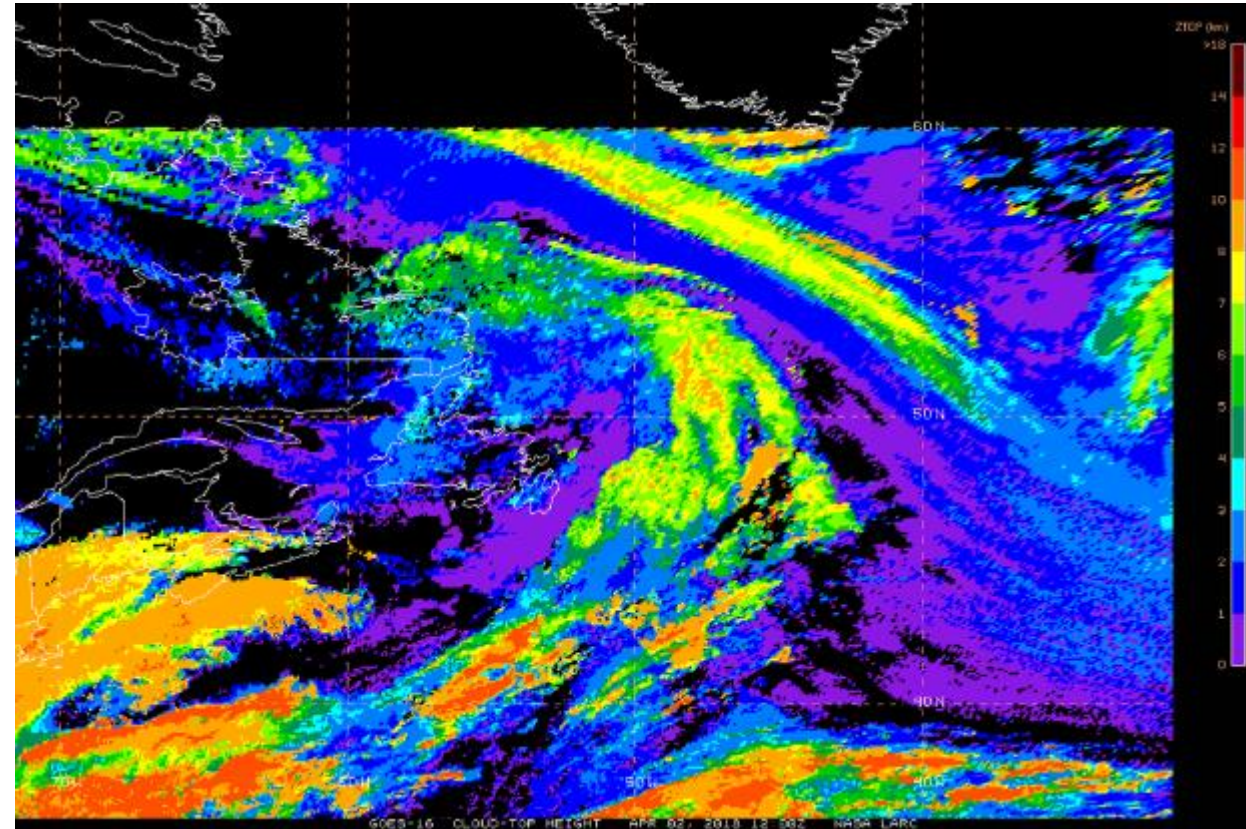


# GOES-16 Cloud Products (4/2 12:00 UTC)

Cloud Base Heights



Cloud Top Heights





# Current NAO

